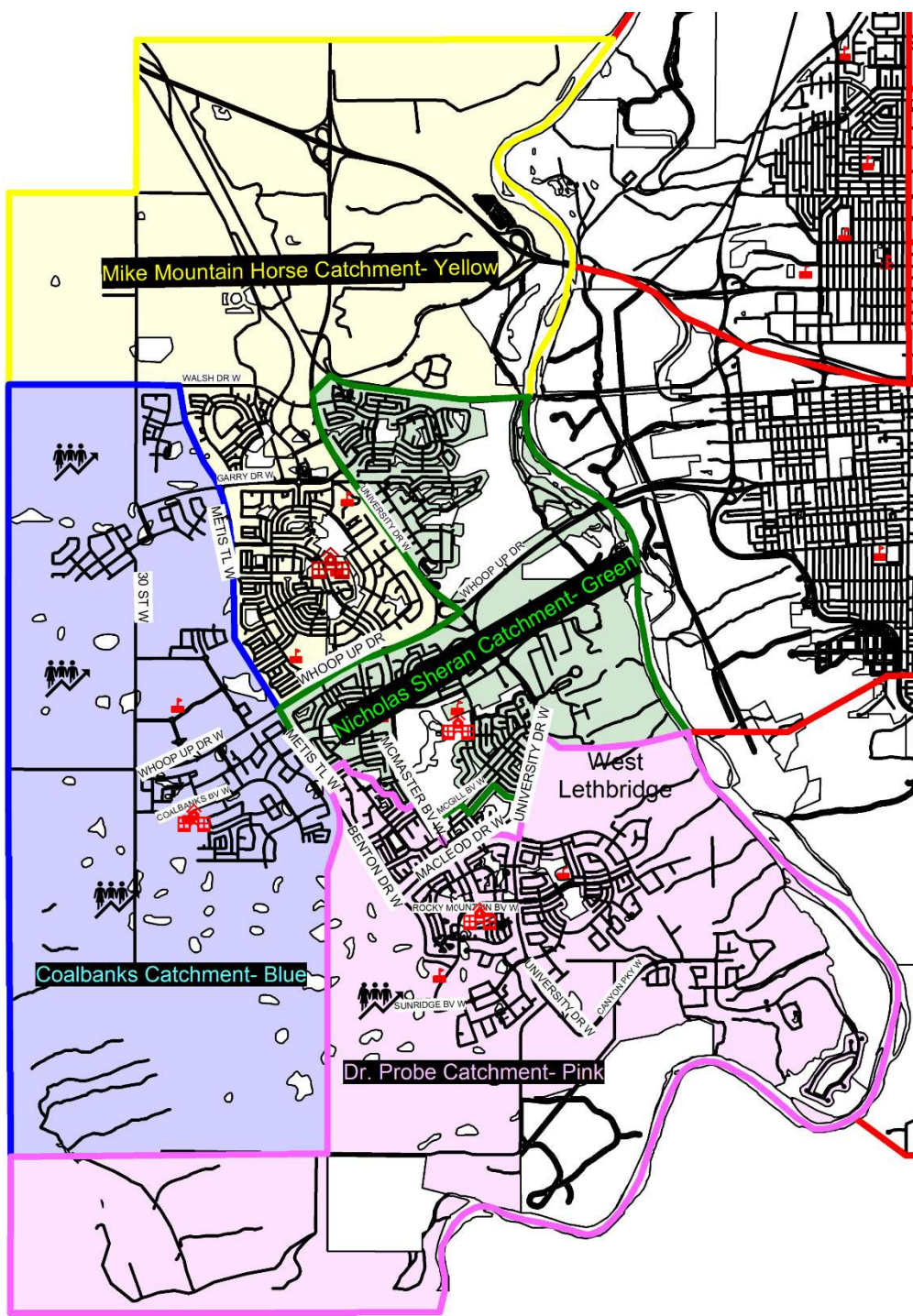
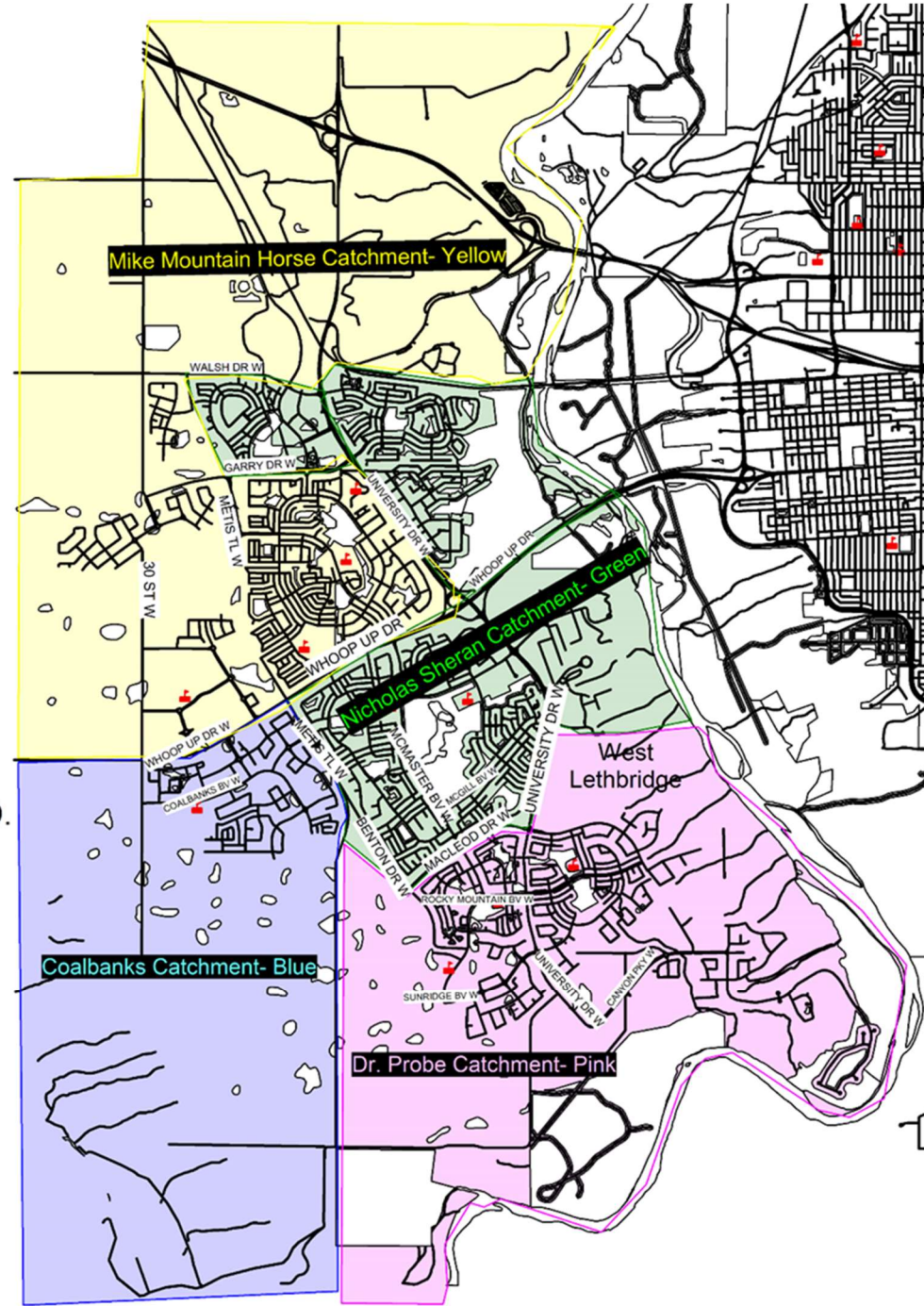


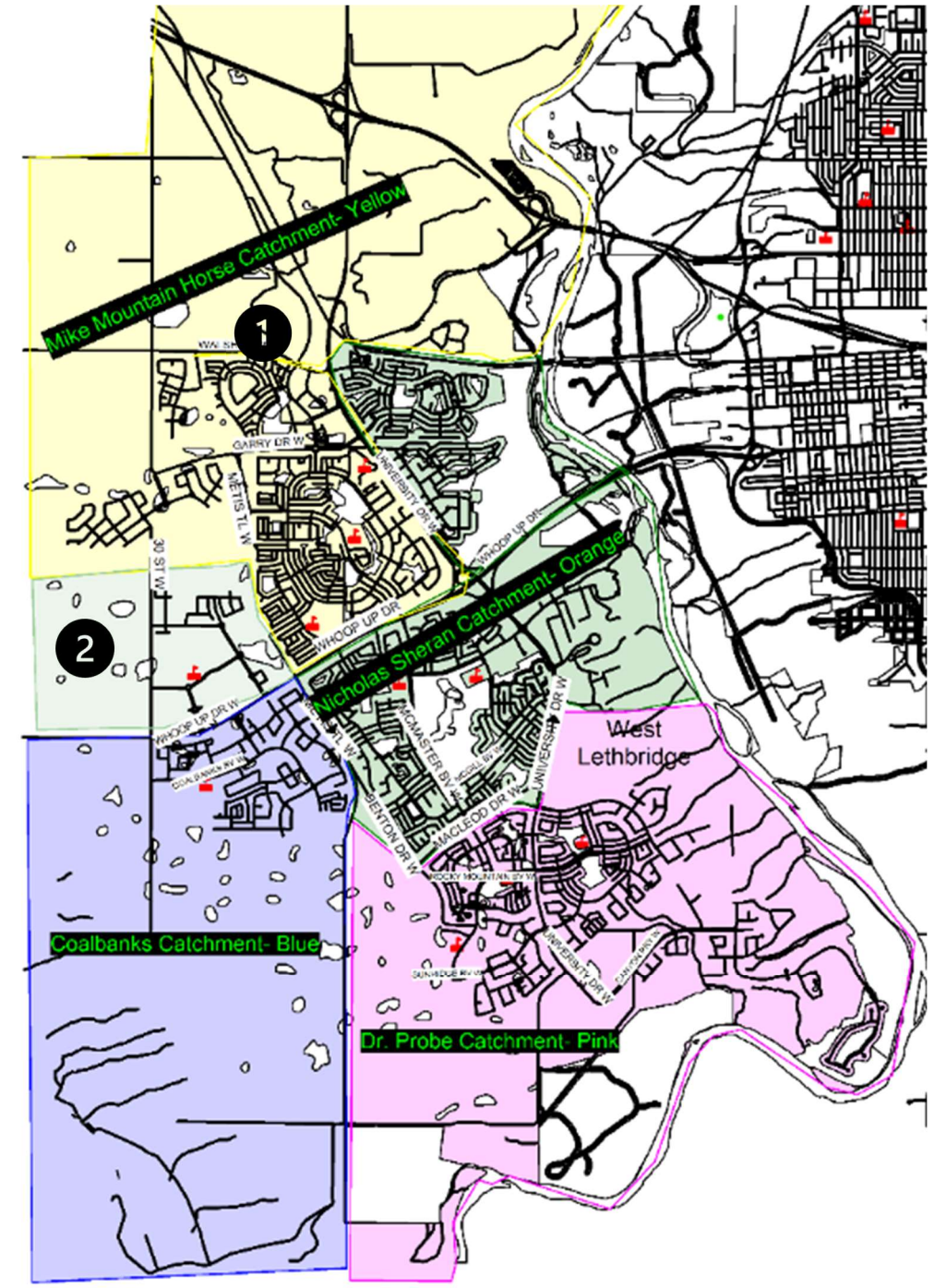
West Lethbridge Elementary Boundaries – Current



West Lethbridge Elementary Boundaries – Proposed Jan 12th



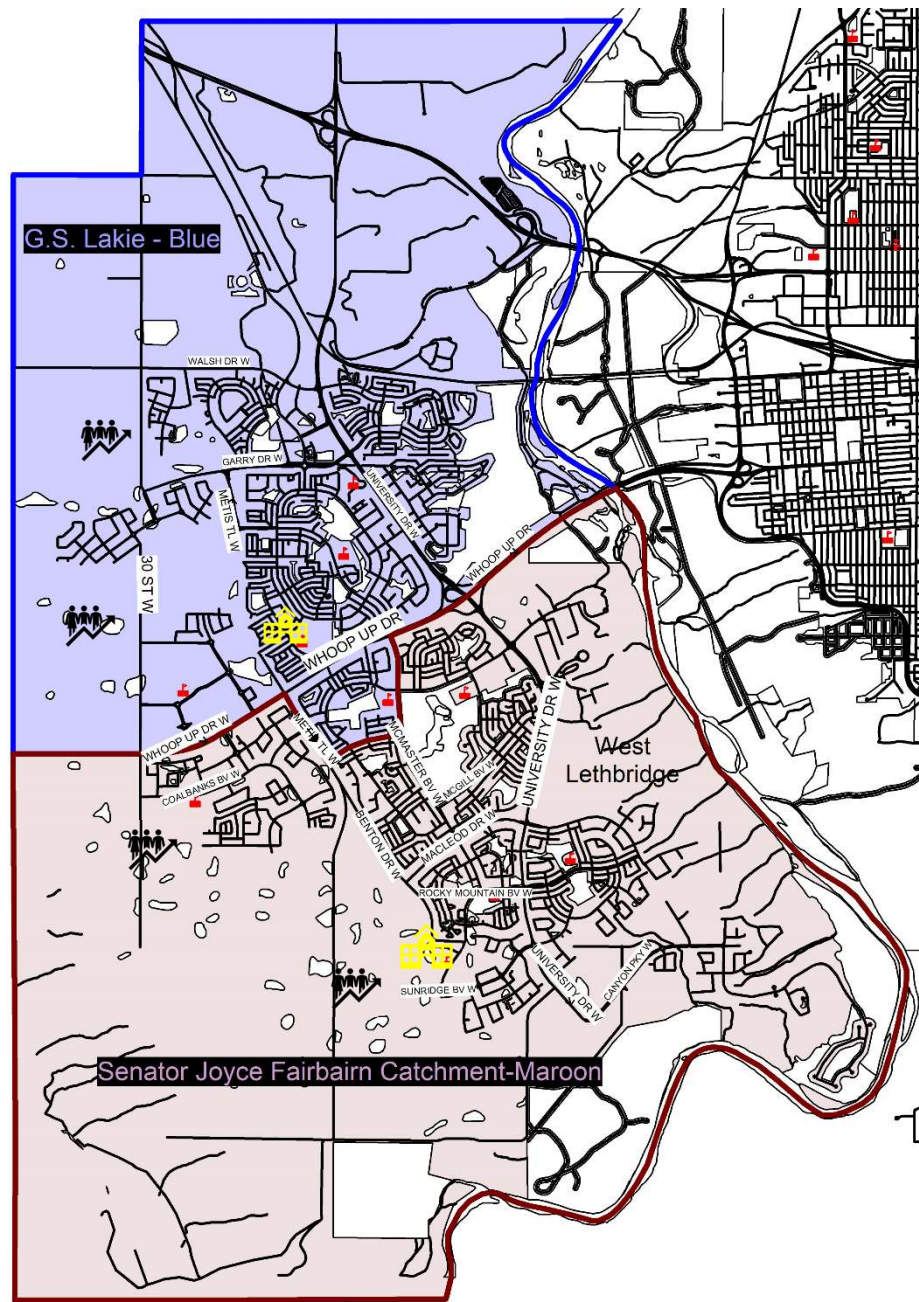
Elementary Boundaries – Proposed Change Feb 10th



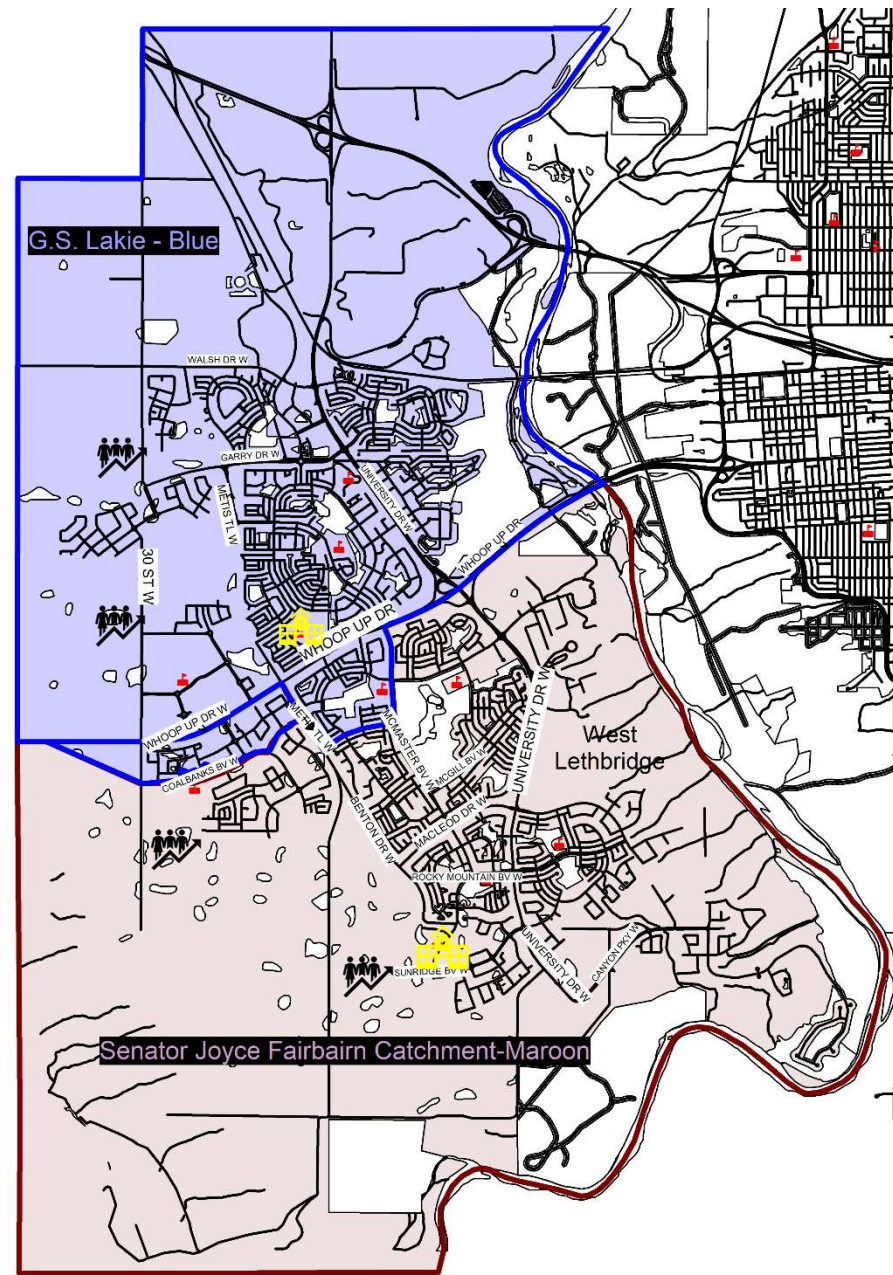
West Lethbridge Elementary:

1. Highlands has been placed back at MMH based on feedback received.
2. Piers/Crossings area is designated to Nicholas Sheran instead. These students would be bussed.

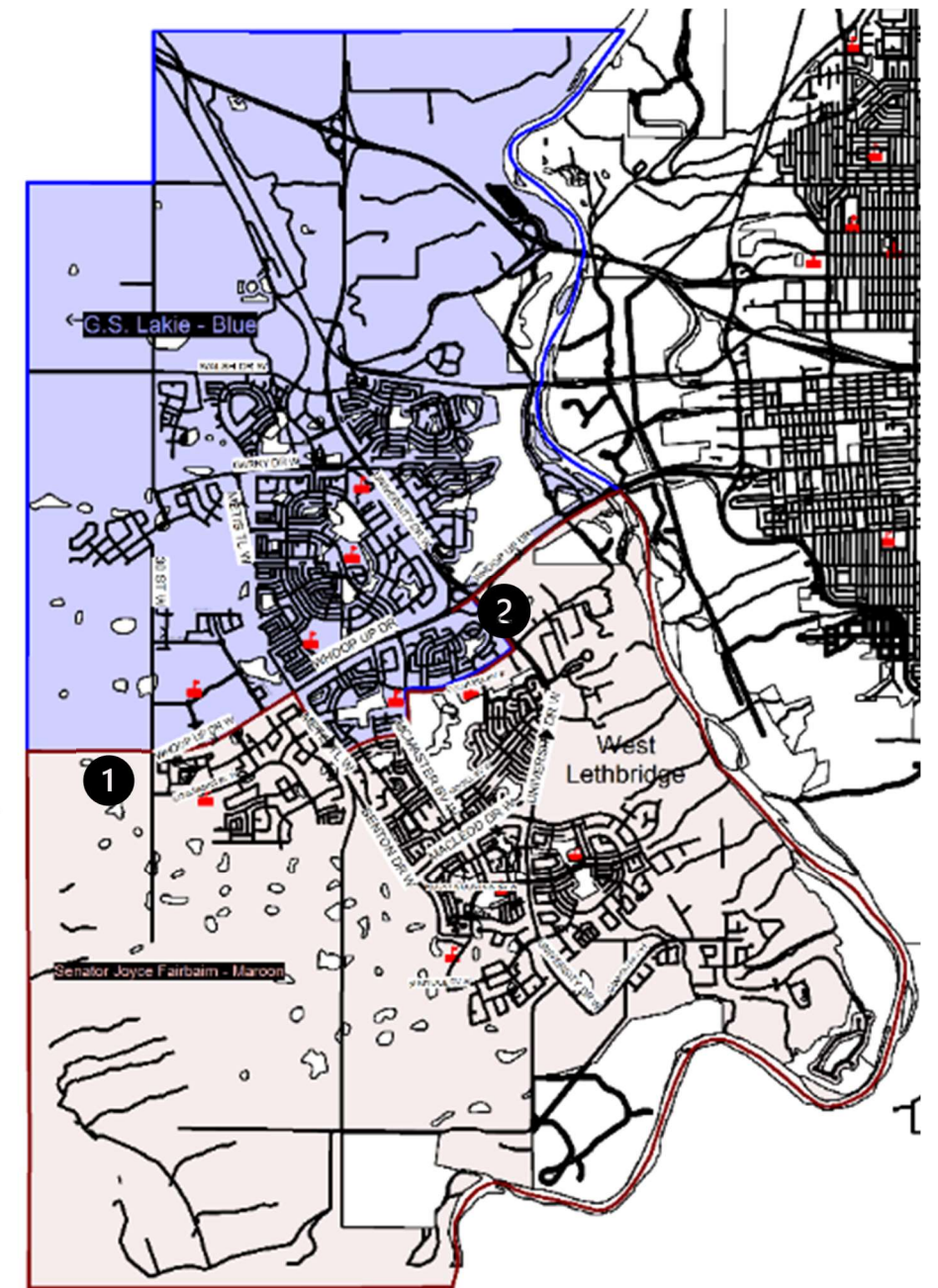
West Lethbridge Middle School – Current



West Lethbridge Middle School – Proposed Jan 12th



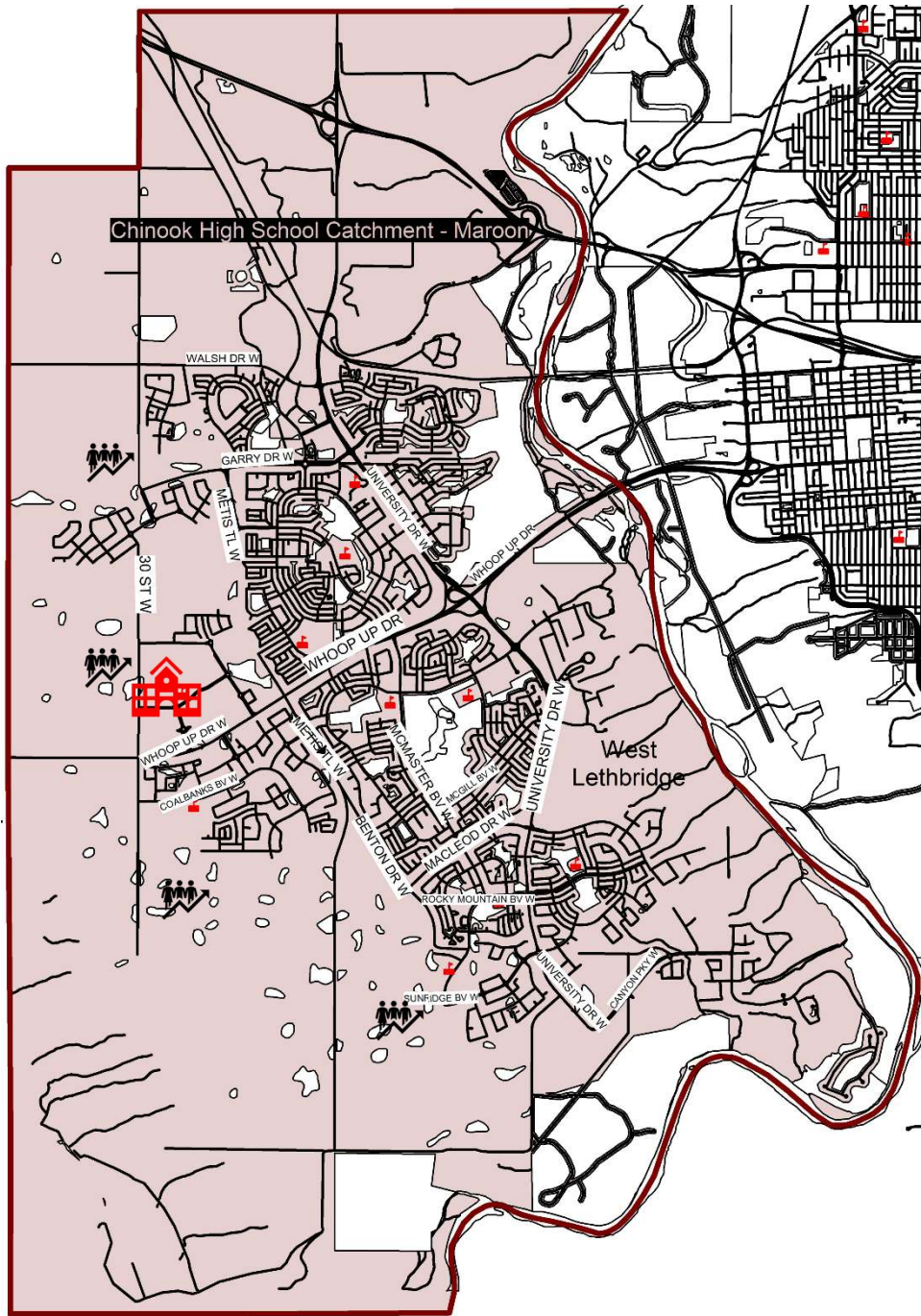
West Lethbridge Middle School – Proposed Changes Feb 10th



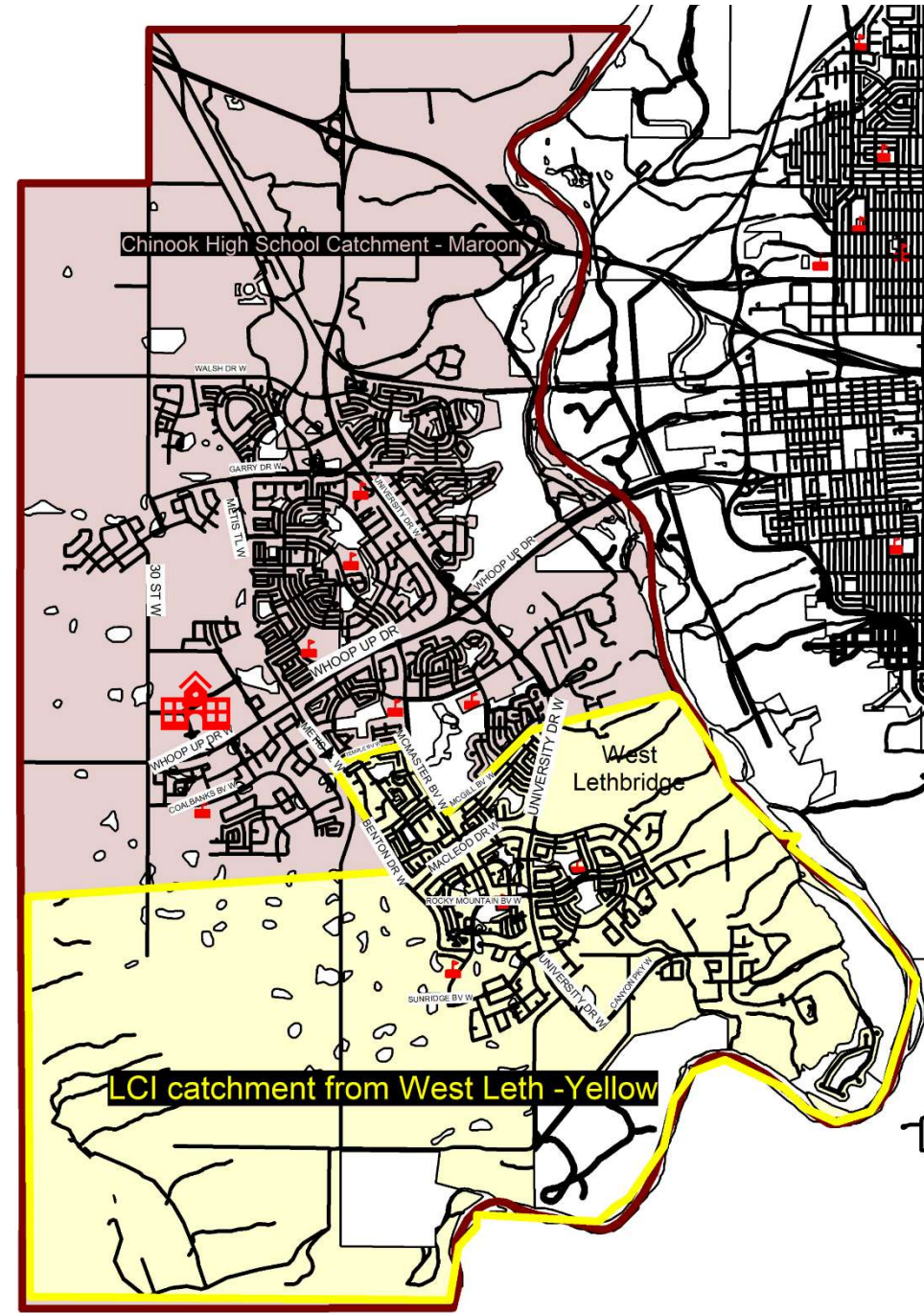
West Lethbridge Middle School:

1. Based on feedback the Coalbanks community will not be split up for middle school.
2. The area that dips into area south of Whoop-up Drive already part of the Lakie boundary will be extended on Columbia Blvd to University Drive.

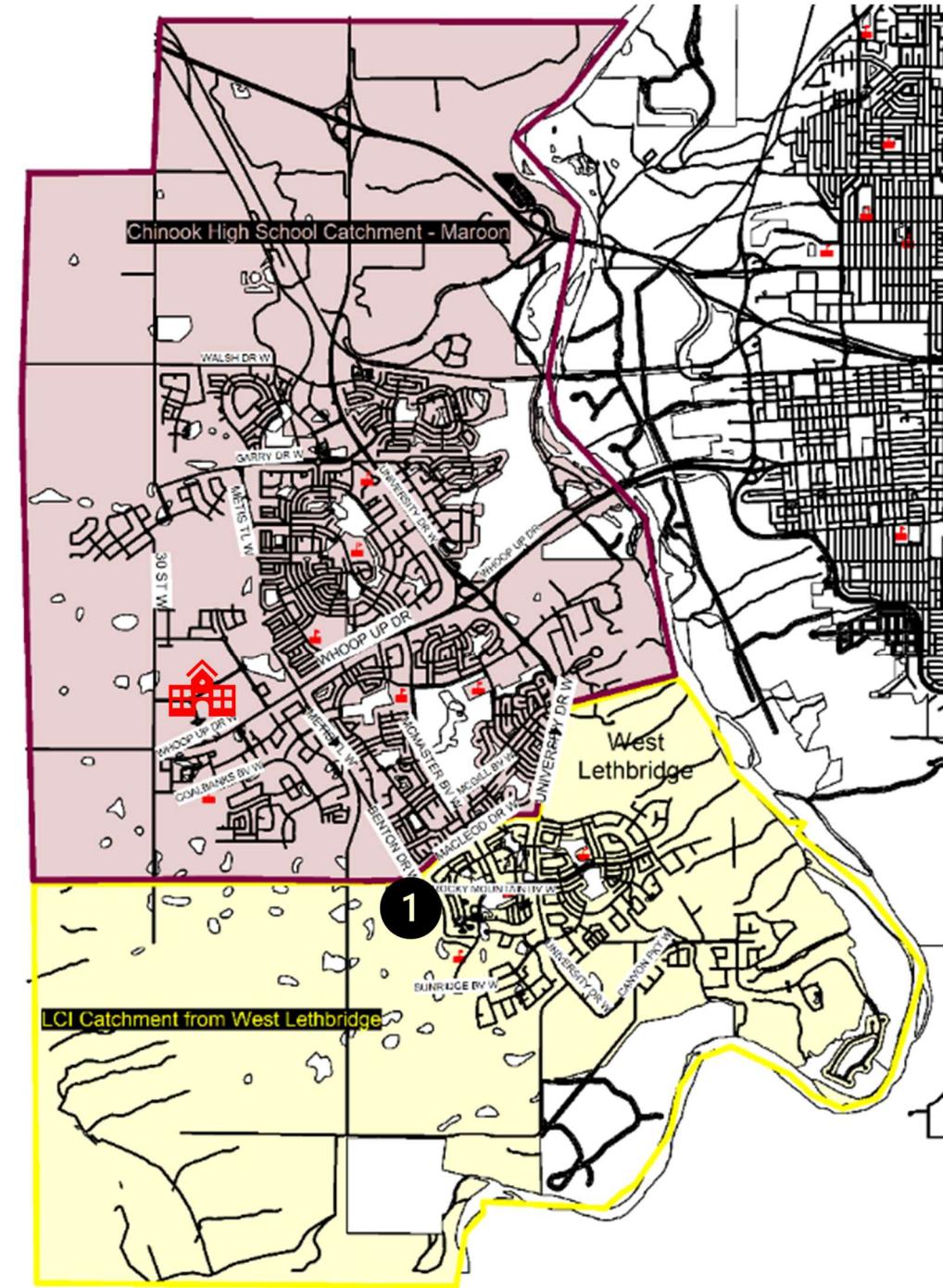
West Lethbridge High School – **Current**



West Lethbridge High School – **Proposed Jan 12th**



West Lethbridge High School – **Proposed change Feb 10th**



West Lethbridge High School:

1. To add more students back into Chinook High School and create a better cut line for the boundary, the boundary has been moved to have all students south of McLeod Drive go to LCI from West Lethbridge.

