



Lethbridge School Division

Boundary Review

West Lethbridge



Table of Contents

Table of Contents	2
Introduction.....	3
Purpose	3
Boundary Review Committee.....	3
Considerations for the Boundary Review	4
Review Timeline	5
Enrolment and Capacity challenges.....	5
Facility Capacity	5
Enrolment Growth	7
Overview of proposed changes	8
Elementary.....	9
Middle School.....	10
High School.....	10
Enrolling in new proposed boundaries	11
Proposed School Boundary Pathways.....	12
Proposed English Program Catchment Pathways.....	12
Proposed French Immersion Catchment Pathways.....	12
Transportation Impacts	12
School Boundary Maps – Current.....	14
Elementary - Current Boundaries	14
Middle School - Current Boundaries	15
High School -Current Boundaries	16
School Boundary Maps – Proposed 2021-2022	17
Elementary.....	17
Middle School.....	19
High School.....	21
Community Engagement	22
Pre-Recorded Presentation.....	Error! Bookmark not defined.
Feedback Opportunities/Questions and Answers.....	Error! Bookmark not defined.

Introduction

Purpose

The purpose of the boundary review is to examine facility capacity, programming, and enrolment projections to determine if new elementary and high school boundaries are required in West Lethbridge. The review also considers how enrolment is balanced between the two West Lethbridge middle schools.

Lethbridge School Division has 4 elementary schools, 2 middle schools and 1 high school in West Lethbridge. Three out of 4 of the elementary schools are south of Whoop-Up Drive. A new middle school, Senator Joyce Fairbairn Middle School, was opened September 2018, providing two middle schools to address capacity pressures. There is only one high school, Chinook High School, which is at full capacity. West Lethbridge has consistently been the area of highest population growth in the city, per the City of Lethbridge census, for the last several years. West Lethbridge also has **4 out of the 6** new community development areas within the City. With continued growth and development in this sector of the city there is a need to review facility capacity, enrolment pressures and seek solutions related to addressing continued growth. The Board of Trustees has advocated for two new elementary schools in West Lethbridge but may not see a new school for several years. There is an immediate need to address growth and capacity issues at both elementary and high school in West Lethbridge.

Boundary Review Committee

To ensure that the review takes into consideration a number of factors and perspectives, the committee is comprised of members from schools that will be most impacted by a proposed change to school boundaries. Involvement of these stakeholders at the beginning is important to the process of reviewing growth and capacity challenges in West Lethbridge. The members of the committee include:

Trustees: Jan Foster, Donna Hunt, Doug James

Senior Administration: Cheryl Gilmore, Superintendent; Morag Asquith, Associate Superintendent Instructional Services; Christine Lee, Associate Superintendent Business Affairs; Mike Nightingale, Associate Superintendent, Human Resources

West Lethbridge Principals: Kevin Wood, Chinook High School; Sharon Mezei, G.S. Lakie Middle School; Bill Bartlett, Senator Joyce Fairbairn Middle School; Keith VanderMeer, Dr. Probe Elementary; Joey Gentile, Coalbanks Elementary; Erin Hurkett, Mike Mountain Horse Elementary; Deborah Constable, Ecole Nicholas Sheran Elementary

Other members: Cheryl Shimbashi, Transportation Coordinator; Daniel Heaton, Director of Facility Services

Considerations for the Boundary Review



Facility
Capacity



Community
Growth



Current
Enrolment



Enrolment
Projections



Transportation



Programs of Choice
(French Immersion)



School Transitions

Boundary Review Committees consider a variety of factors when considering boundary changes, such as the following:

- Existing and proposed boundaries
- Enrolment projections (5 or 10 years as appropriate)
- Future residential growth potential
- Number of students impacted by the boundary change
- Implications for program delivery (specialty programs, class size, structure)
- Community based boundaries vs program boundaries
- Grade configuration
- Facility utilization
- Transportation considerations
- Capital implications (modular classrooms, new construction, Infrastructure Maintenance and Renewal)

Review Timeline



Enrolment and Capacity challenges

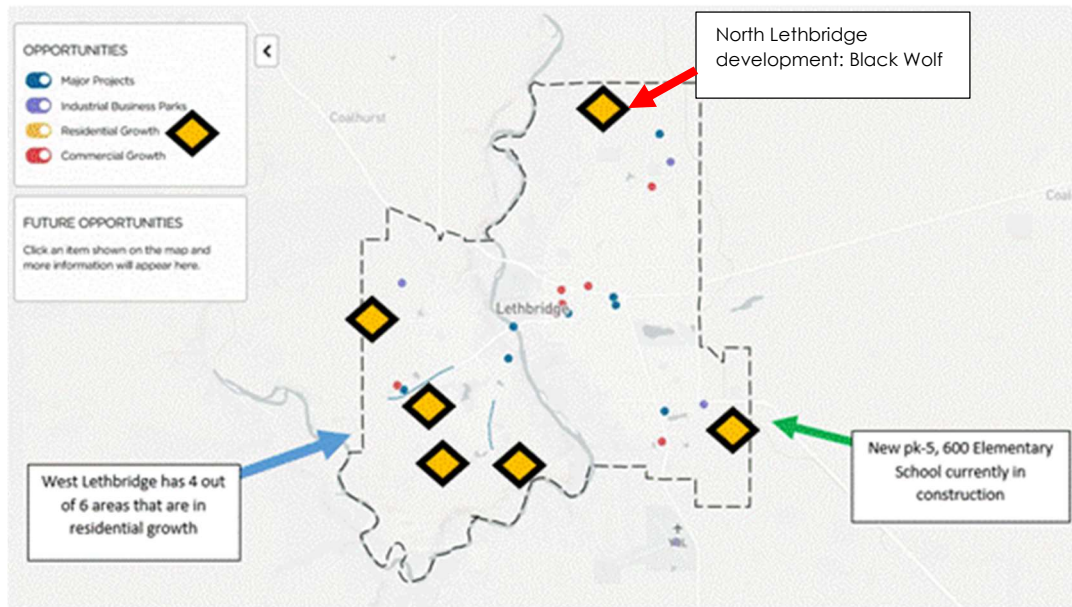
Facility Capacity

The 2019 City of Lethbridge Census once again showed West Lethbridge as having the highest area of growth within the City. Since 2015, West Lethbridge population has grown by **13.3%** north of Whoop-up Drive and **10.02%** south of Whoop-up Drive. In the *Areas of Growth in Lethbridge* chart, it is shown that **four (4) out of six (6)** areas of new subdivision growth are in West Lethbridge. This continued growth puts pressure on existing school facilities.



Areas of Growth in Lethbridge

Chart provided by Economic Development Lethbridge



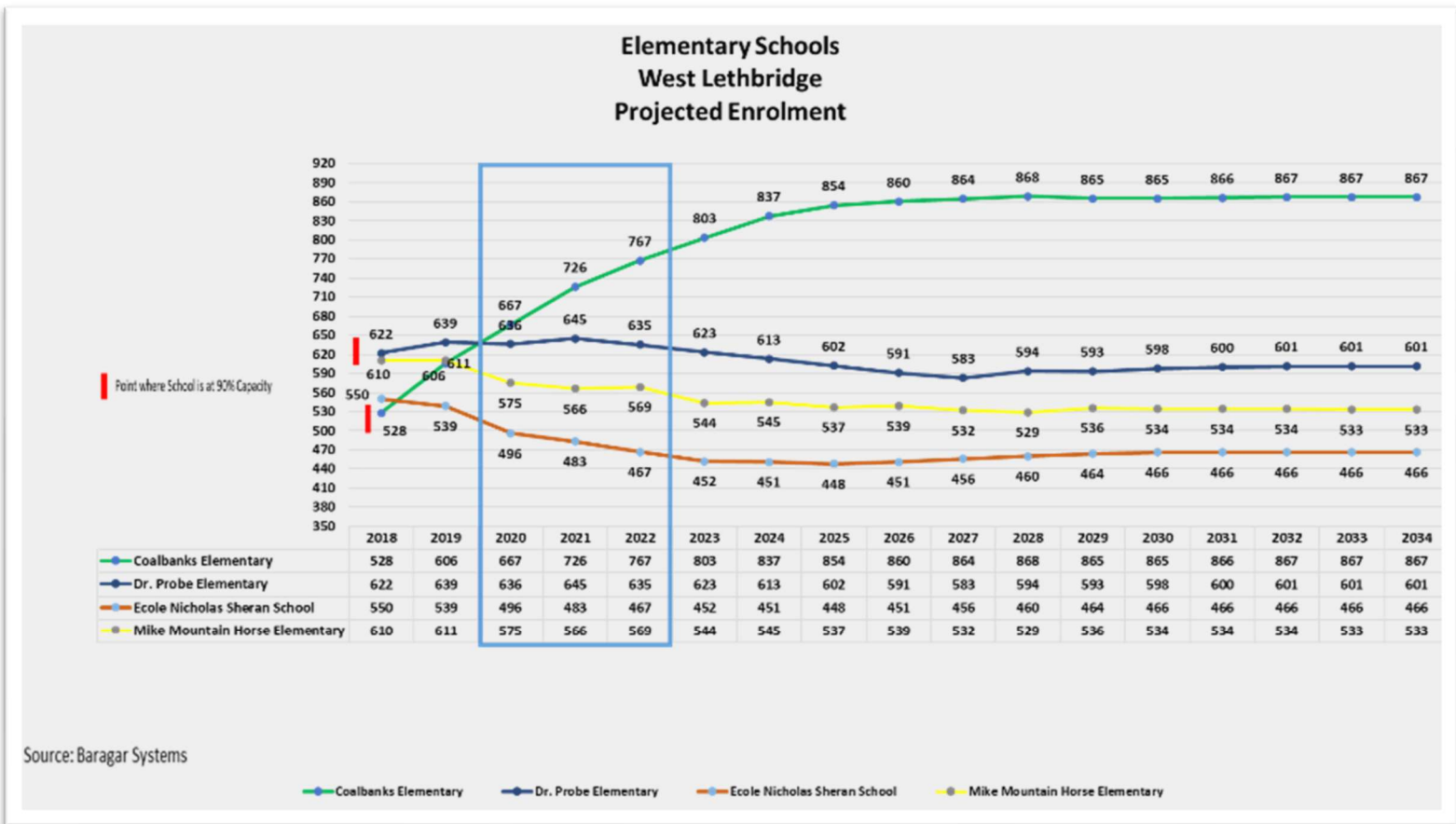
The four elementary schools in West Lethbridge already have numerous modular classrooms that have been added over the years to address enrolment growth. Currently, capacity is between **80% and 98%** with core capacity (capacity without modulars) between **175% to 202%**. Mike Mountain Horse is currently at 80% capacity including 21 modular classrooms. Eight of these classrooms are considered to be near end of life cycle. Currently, high core capacity at the four elementary schools creates a significant strain on core services such as Learning Commons and gathering spaces. At Chinook High School, capacity is at **86%**, with stress being placed on core programming space. Enrolment is expected to grow to an amount that puts the capacity over **112%** within five years. At Middle Schools in West Lethbridge, capacity concerns were addressed with the opening of Senator Joyce Fairbairn Middle School. However, there is a need to ensure proper enrolment balance between the two schools. Enrolment projections, based on current boundaries, would suggest that boundaries need to be adjusted to address future enrolment imbalance and ensure program viability at both middle schools in West Lethbridge.



Enrolment Growth

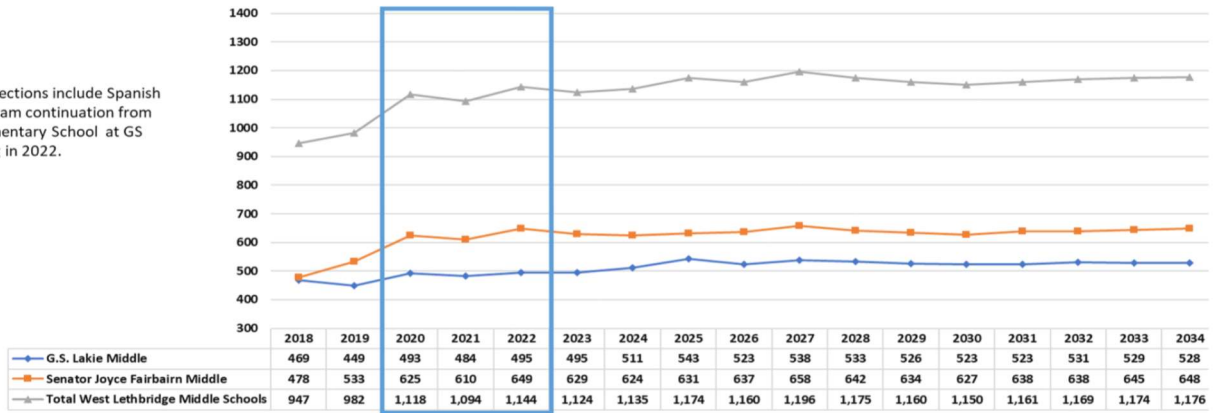
The charts below show anticipated enrolment growth over the next 15 years for West Lethbridge elementary, middle and high schools.

Currently, growth areas in West Lethbridge, such as Country Meadows, Gary Station, Piers, and Copperwood, are designated to Coalbanks Elementary School. With Coalbanks at **97%** capacity there is a need to review current boundaries at elementary school.



Middle Schools West Lethbridge Projected Enrolment

Note:
Enrolment projections include Spanish Bi-lingual program continuation from Coalbanks Elementary School at GS Lakie beginning in 2022.

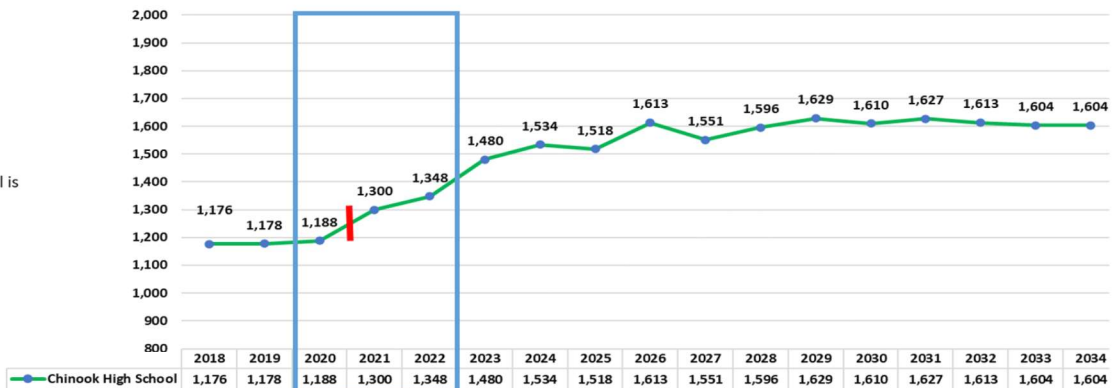


Source: Baragar Systems

Current Middle School Boundaries assume that the Spanish Bilingual program will continue for Grade 6 at G.S. Lakie Middle School beginning in 2022-2023. Chinook High School is the only high school in West Lethbridge and enrolment projections indicate that enrolment will surpass capacity by almost 300 students by 2026 if nothing is done.

High Schools West Lethbridge Projected Enrolment

Point where School is at 90% Capacity

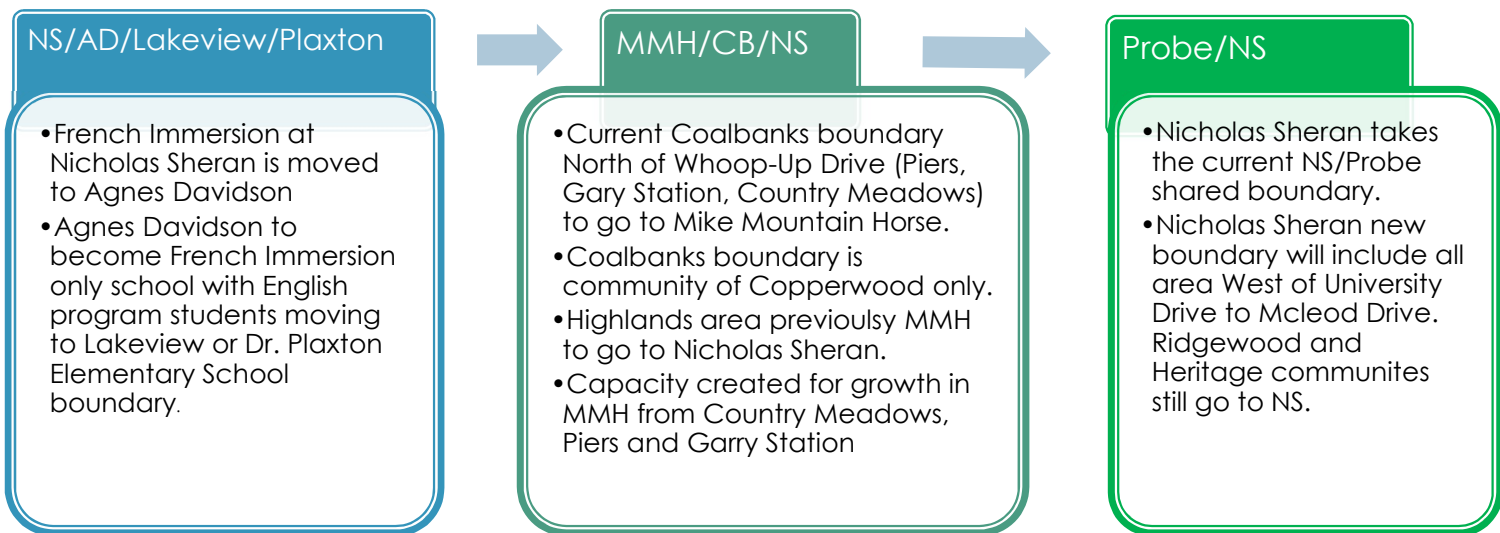


Source: Baragar Systems

Overview of proposed changes

Elementary

Scenario assumes no new school in West Lethbridge has been announced and is a long-term solution to address growth and capacity concern at elementary schools in West Lethbridge. Should a new school be announced for Garry Station, a redraw will be done that impacts Mike Mountain Horse School, due to age of modular classrooms.



School	Capacity	Enrolment 2019-2020	% Capacity Before change	Estimated Enrolment 2021-2022 after changes	% Capacity After change
Coalbanks	625	606	97%	545	87%
Dr. Gerald Probe	650	639	98%	591	91%
Ecole Nicholas Sheran	639	539	84%	501	78%
Mike Mountain Horse	763	611	80%	552	72%

*uses projections of future enrolment actuals may vary from projections.

Middle School

GS Lakie/ Fairbairn

- Move half of Copperwood from Fairbairn to G.S. Lakie. All North of Coalbanks Blvd to go to Lakie from Fairbairn.
- G.S. Lakie will house middle school Spanish bi-lingual programming for grades 6 to 8.
- Note Lakie still has growth areas in boundary that are North of Whoop-up drive. Fairbairn will have growth areas in South area of West Lethbridge.

School	Capacity	Enrolment 2019-2020	% Capacity Before change	Estimated Enrolment 2021-2022 after changes	% Capacity After change
G. S. Lakie	761	449	59%	537	71%
Senator Joyce Fairbairn	775	533	67%	557	72%

*uses projections of future enrolment actuals may vary from projections.

High School

Chinook/LCI

- Reduce Chinook Boundary by moving students that reside south of Temple Blvd W, communities of Riverstone, Canyons, Sunridge and future growth area of Watermark moving to LCI.
- One grade will be moved each year over 4 years for transition purposes (grade 9, grade 9 & 10, grade 9, 10, 11, and grade 9-12). Approximately 70 to 82 students per grade each year.
- Due to growth at Chinook, enrolment will remain stable through to 2025, with removing the students, while LCI will increase in enrolment.
- Note that growth area on South end of West Lethbridge will go to LCI, in particular Watermark, which has not yet commenced development.
- Drawback is that Fairbairn students will be split when transitioning to High School with some going to Chinook and some students to LCI.

School	Capacity	Enrolment 2019-2020	% Capacity Before change	Estimated Enrolment 2021-2022 (move grade 9 only)	Estimated Enrolment 2022-2023 (move grade 9, 10)	Estimated Enrolment 2023-2024 (move grade 9, 10, 11)	Estimated Enrolment 2024-2025 (move grade 9, 10, 11, 12)	% Capacity After change
Chinook	1375	1178	86%	1230	1208	1264	1206	88%
LCI	2191	896	41%	1043	1149	1289	1404	64%

*uses projections of future enrolment and estimated per grade movement. Actuals may vary from projections.

Enrolling in new proposed boundaries

Enrolment in new school boundaries will take **effect for the 2021-2022 school year**. There will be strict adherence for students to attend the newly-established boundaries to address facility capacity and enrolment growth pressures.

The School Division will continue to follow policy 501.3.1 *School Choice* that allows for fair and just consideration of requests made to have students enrolled in a school outside of their attendance area. Decisions will be based on the following criteria, including:

- Availability of space;
- Educational considerations, including class composition;
- Projected enrolment for the school;
- Suitability of school programs and services for that student;
- Students priority of enrolment (as per regulation 4 of the policy); and
- Additional costs to the school and/or Division.



Proposed School Boundary Pathways

Proposed English Program Catchment Pathways



West Lethbridge Family of Schools		
Elementary School	Middle School	High School
Coalbanks	Senator Joyce Fairbairn	Lethbridge Collegiate Institute (South Lethbridge)
Dr. Gerald B. Probe		
Ecole Nicholas Sheran	G. S. Lakie	Chinook High School
Mike Mountain Horse		



Proposed French Immersion Catchment Pathways

West Lethbridge Family of Schools		
Elementary School	Middle School	High School
École Agnes Davidson (South Lethbridge)	Gilbert Paterson (South Lethbridge)	Lethbridge Collegiate Institute (South Lethbridge)



Transportation Impacts

Elementary Schools

French Immersion students: All West Lethbridge French Immersion students will need to be bused to Agnes Davidson. This is likely to require four additional bus routes, for an approximate cost of \$200,000. Highlands students would be bused to Nicholas Sheran. All these students would qualify for transportation funding under current Alberta Education funding guidelines. As long as funding flows for these students' this additional cost is not a concern.

Small shifts in transportation with other elementary school boundaries but not extensive and should be manageable within current transportation budget.

Middle School

Coalbanks-area students currently going to Fairbairn are bused, the section being moved to G..S Lakie would not qualify for bussing, reducing transportation costs slightly.

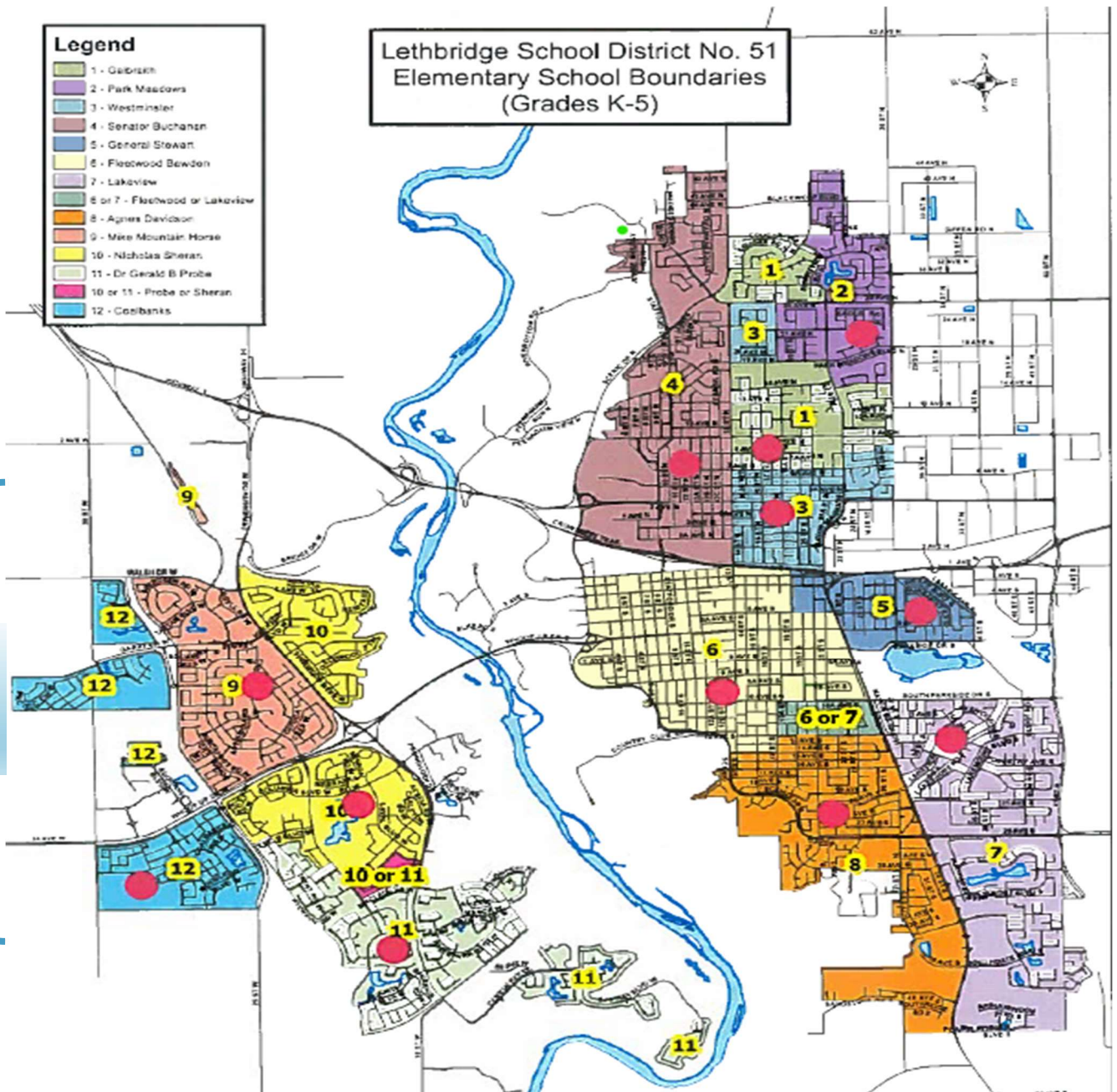
High School

Assuming all students ride the school bus from West Lethbridge to LCI, there would need to be transportation to South Lethbridge. Most of the students in the new boundary area would already qualify for transportation. Additional cost of bussing would be related to additional fuel cost to the south side of Lethbridge.

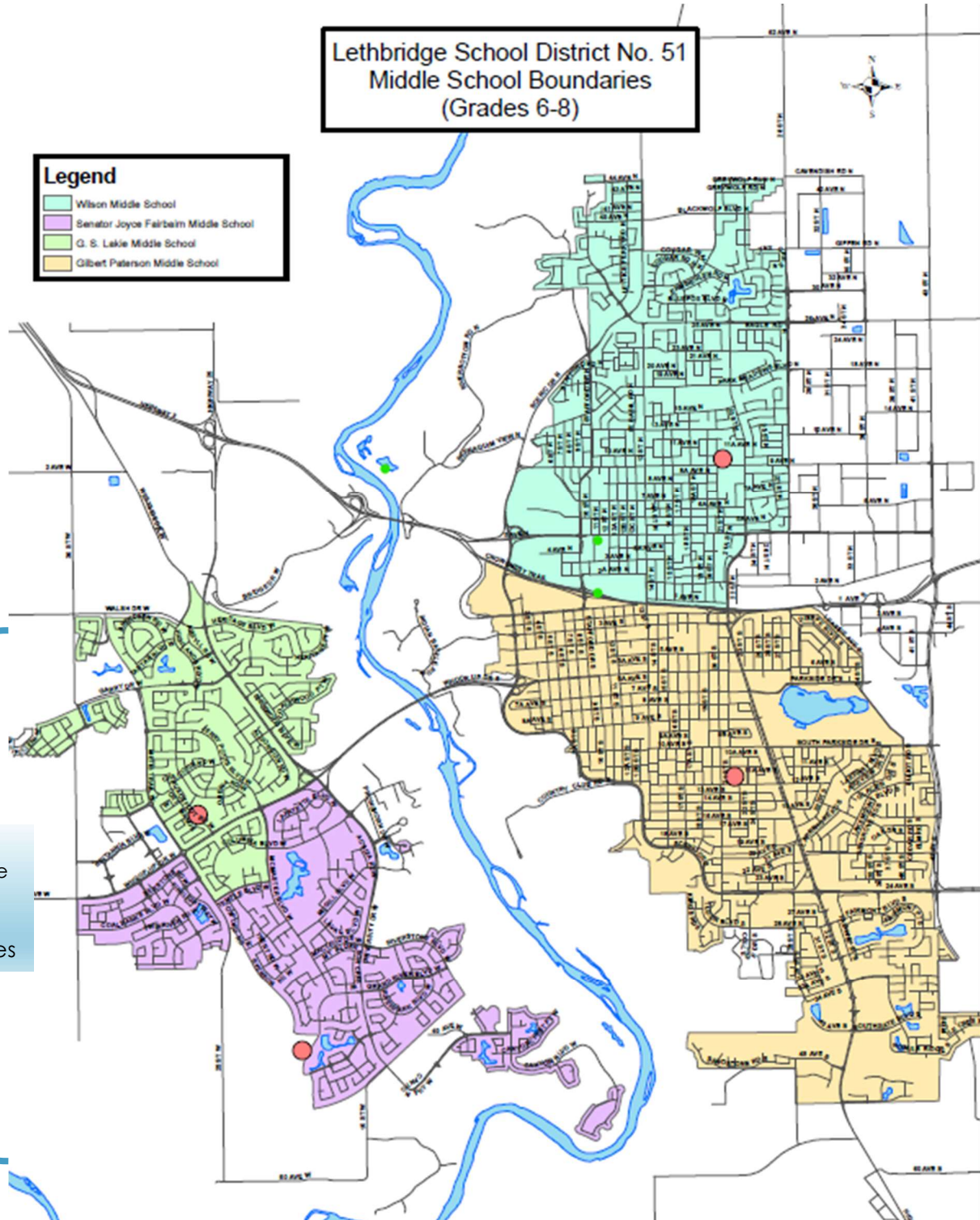


School Boundary Maps – Current

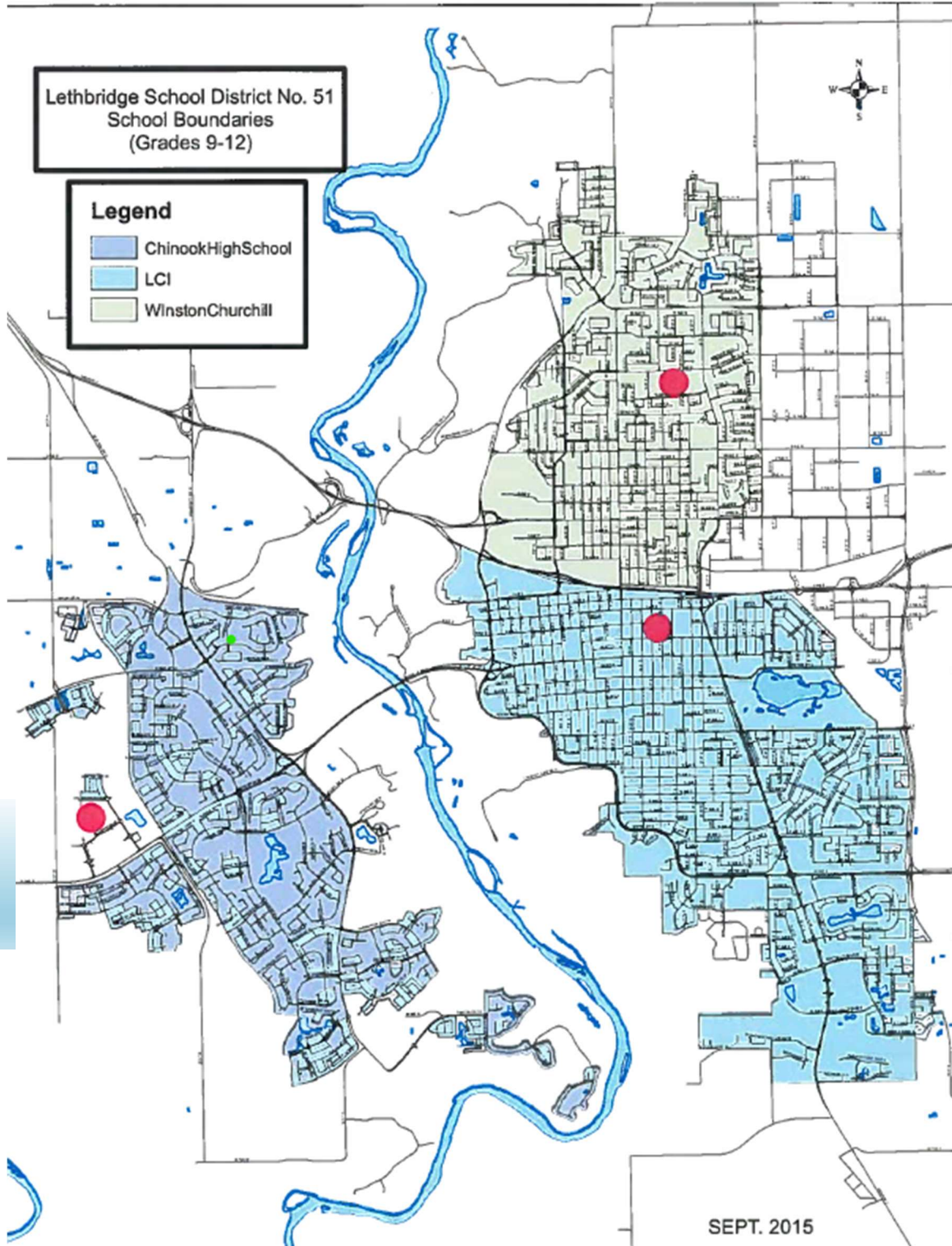
Elementary - Current Boundaries



Middle School - Current Boundaries




High School - Current Boundaries

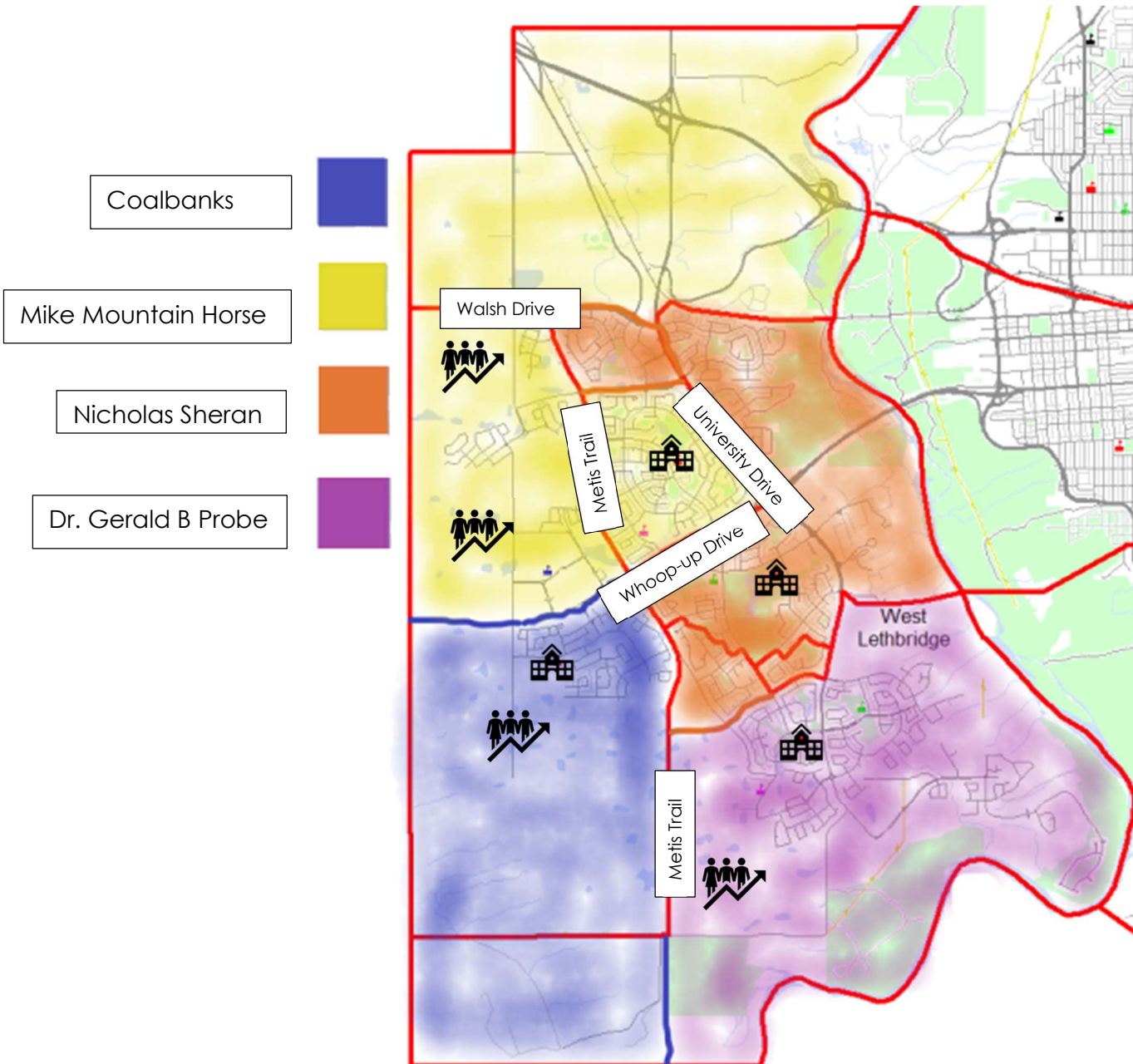


School Boundary Maps – Proposed 2021-2022

Elementary- Proposed

 Red Line- Current Boundaries. Shaded colour is new proposed boundaries for West Lethbridge Elementary Schools. See details by school to follow.

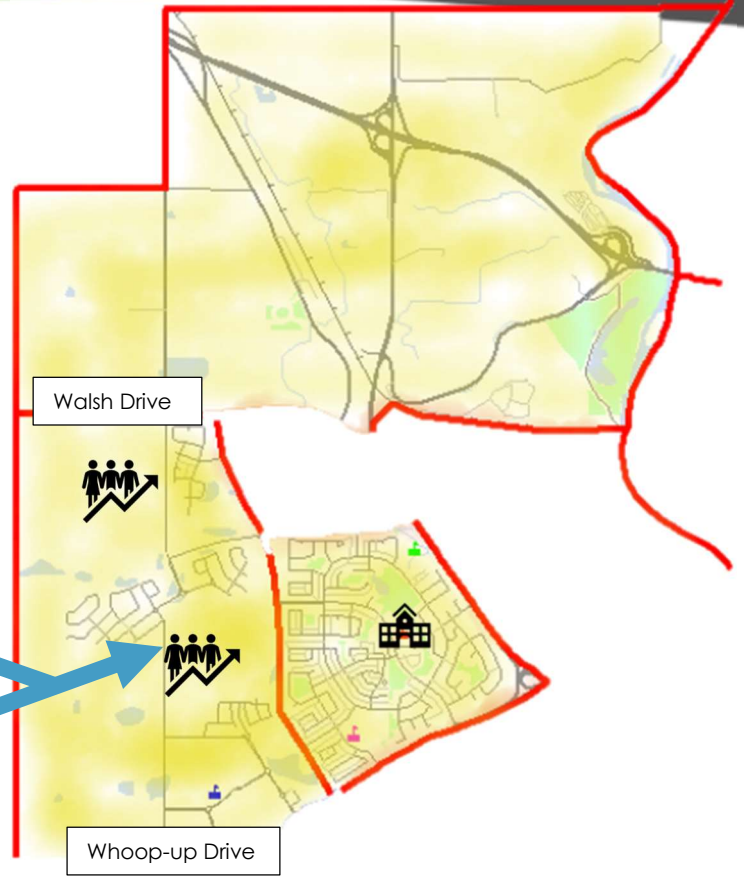
 Planned community growth



Mike Mountain Horse School

Current boundary with removal of Highlands area to Nicholas Sheran and the addition of communities north of Whoop and West of Metis Trail, previously at Coalbanks.

This area originally at Coalbanks now goes to Mike Mountain Horse



Coalbanks Elementary School

Move north of Whoop Up Drive to Mike Mountain Horse. Boundary is the community of Copperwood only.

Whoop-up Drive



The Highlands Community previously at MMH will now go to Nicholas Sheran

Heritage and Ridgewood communities still attend Nicholas Sheran

Nicholas Sheran (English only)

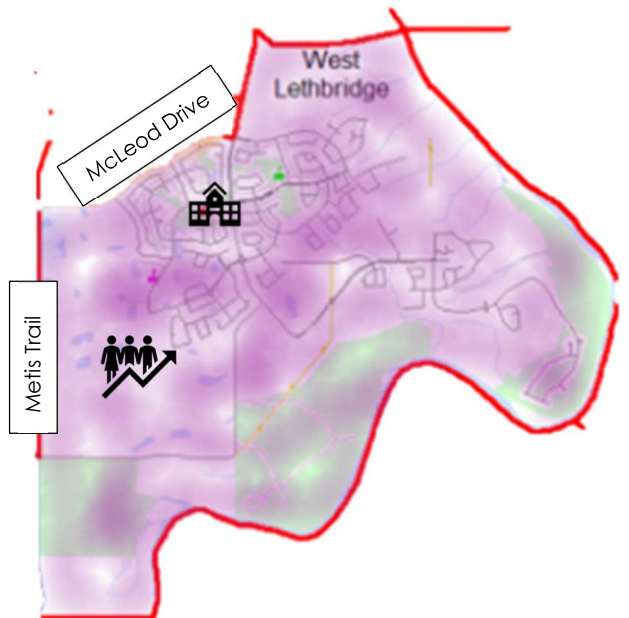
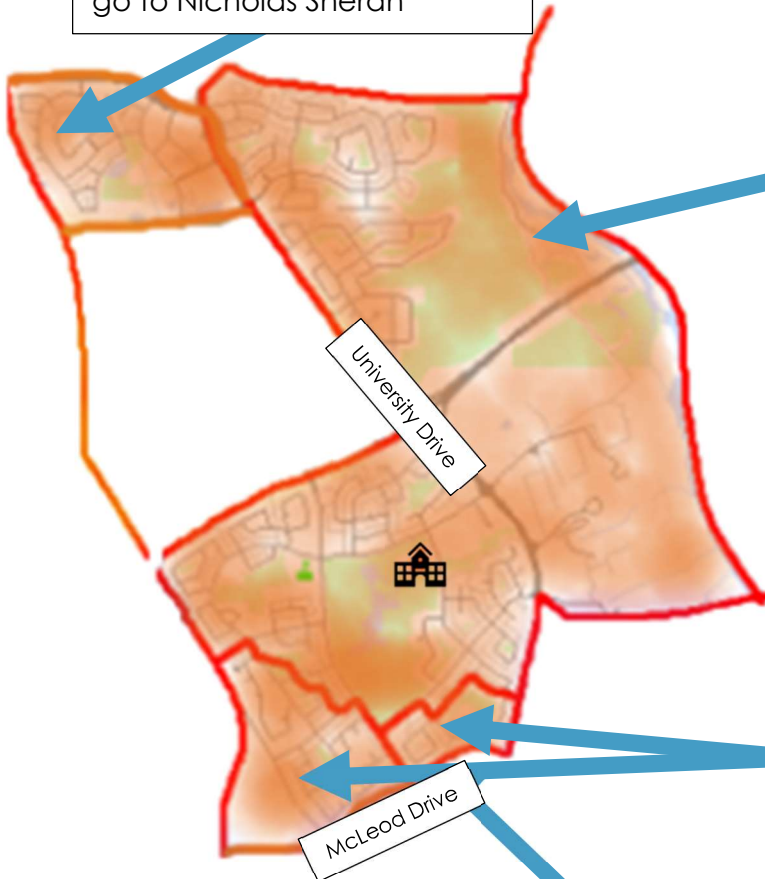
French Immersion moved to École Agnes Davidson.

Boundary expanded include the Highlands community and expand area to McLeod Drive. Retain Heritage and Ridgewood communities.

Shared area between Nicholas Sheran and Probe now goes to Nicholas Sheran. The area to McLeod Drive previously in Probe moved to Nicholas Sheran.

Dr. Gerald B. Probe

Reduction of boundary to east of Metis Trail and south of McLeod Drive.



Middle School - Proposed

— Red Line - Current Boundaries. Shaded colour is new proposed boundaries for West Lethbridge Middle Schools. See details by school to follow.



Planned community growth

Senator Joyce Fairbairn

G.S. Lakie

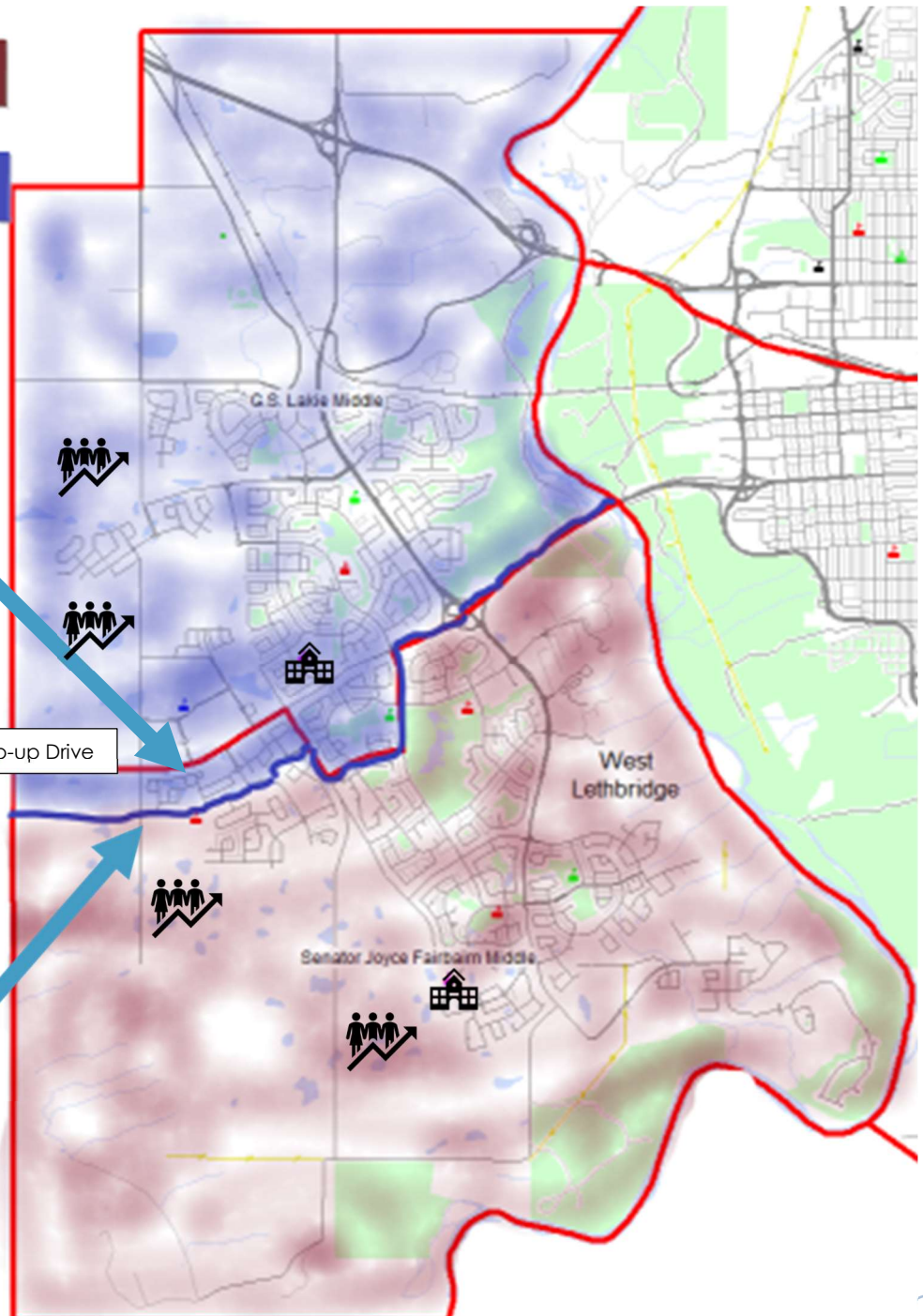
G.S. Lakie Middle School

Boundary now includes half of Copperwood. Everything north of Coalbanks Blvd to Coalbanks Link.

Whoop-up Drive

Senator Joyce Fairbairn

Remove part of Copperwood community from boundary



High School - Proposed

— Red Line - Current Boundaries of Chinook High School. Shaded colour is new proposed boundaries for West Lethbridge High Schools. See details by school to follow.



Planned community growth

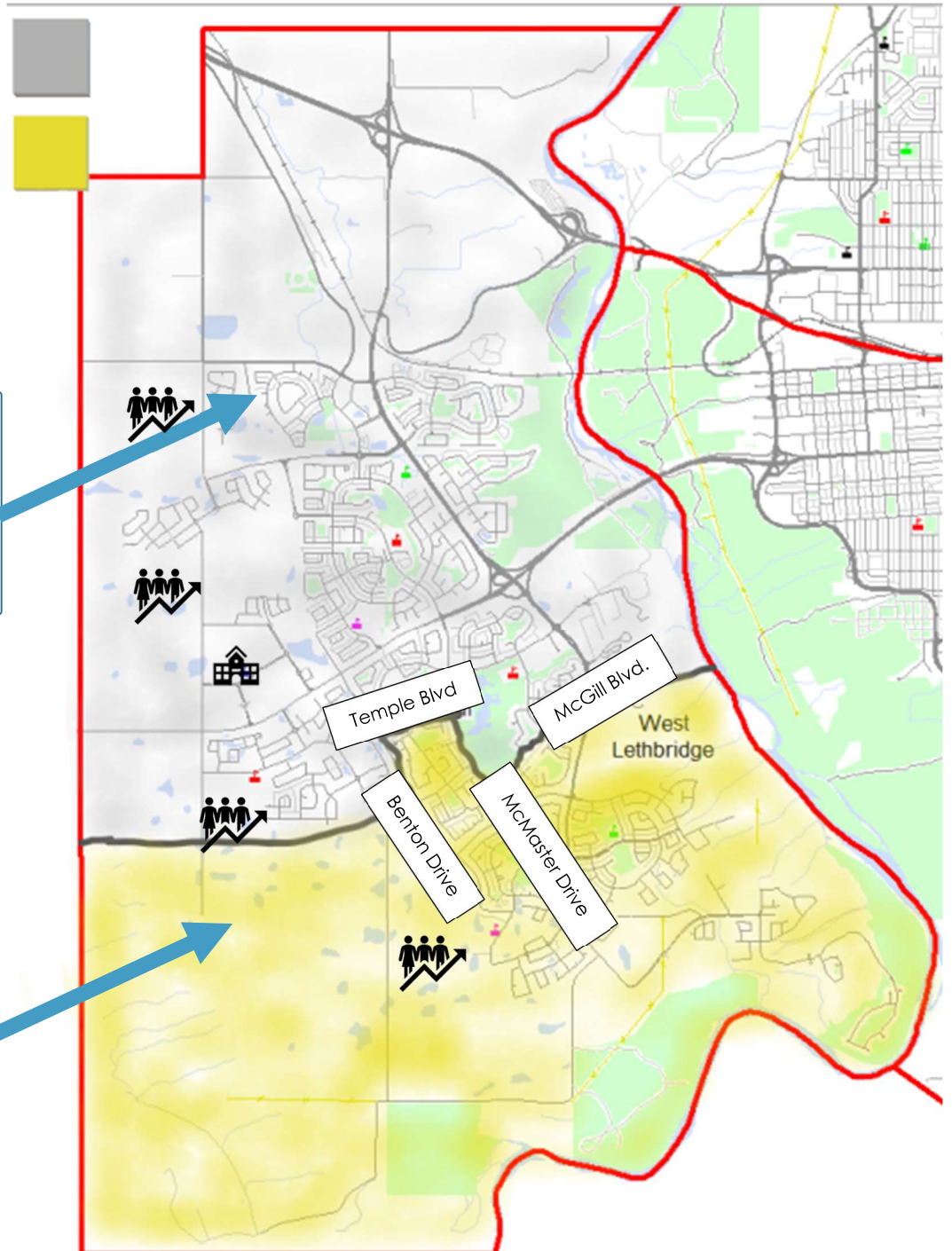
Chinook High School

Lethbridge Collegiate Institute (WL area)

Chinook High School

Removed south of McLeod Drive along Benton Trail and McMaster to McGill Blvd and rest to south also taking

Lethbridge Collegiate Institute boundary will be all South Lethbridge plus this portion from West Lethbridge.



Community Engagement

Pre-Recorded Presentation

A pre-recorded presentation that outlines the proposed boundary review changes for West Lethbridge will be posted on the website for both staff and the public on **January 12th**. Staff will view the presentation starting at 3 p.m. and the public at 6:30 p.m.



Feedback Opportunity/Questions and Answers

Following the presentation of the video, both staff and parents will have the opportunity to provide feedback on the proposed boundary review changes. The website will ask for specific input on the following questions:

1. What do you see as a significant challenge with the boundaries as presented?
2. Do you have a solution for consideration that may address this challenge?
3. Please share any ideas you believe should be given consideration related to the proposed boundaries.
4. Additional Comments on the boundaries as proposed

Feedback will be accepted until January 28th, 2021. The feedback will be provided to the Board of Trustees in early February. The Board will review the feedback and the proposed boundaries will be provided for consideration and approval at the February 23rd meeting of the Board of Trustees.

The School Division understands that staff and students may have many questions related to the proposed boundaries that were presented. The Division, in anticipation of these questions, has posted a Frequently Asked Questions area on the Boundary Review website. There will also be the opportunity to post additional questions.