



Lethbridge School Division

Boundary Review

North Lethbridge



Table of Contents

Table of Contents	2
Introduction.....	3
Purpose	3
Boundary Review Committee.....	3
Considerations for the Boundary Review	4
Review Timeline	5
Enrolment and Capacity challenges.....	5
Facility Capacity	5
Enrolment Growth	6
Overview of proposed changes	7
Elementary.....	8
Middle School.....	9
High School.....	9
Enrolling in new proposed boundaries	10
Proposed School Boundary Pathways.....	11
Proposed English Program Catchment Pathways.....	11
Proposed French Immersion Catchment Pathways.....	11
Transportation Impacts	11
School Boundary Maps – Current.....	13
Elementary - Current Boundaries	13
Middle School - Current Boundaries	13
High School - Current Boundaries	13
School Boundary Maps – Proposed 2021-2022	16
Elementary.....	16
Middle School.....	17
High School.....	17
Community Engagement	17
Pre-Recorded Presentation.....	17
Feedback Opportunity/Questions and Answers	17

Introduction

Purpose

The purpose of the boundary review is to examine elementary school boundaries in North Lethbridge that have not been reviewed for many years to determine if boundaries should be adjusted to realign school enrolment and address growth in the community of Blackwolf.

Boundary Review Committee

To ensure that the review takes into consideration a number of factors and perspectives, the committee is comprised of members from schools that will be most impacted by a proposed change to school boundaries. Involvement of these stakeholders at the beginning is important to the process of reviewing growth, capacity and programming challenges in North Lethbridge. The members of the committee include:

Trustees: Donna Hunt, Doug James

Senior Administration: Cheryl Gilmore, Superintendent; Morag Asquith, Associate Superintendent Instructional Services; Christine Lee, Associate Superintendent Business Affairs; Mike Nightingale, Associate Superintendent, Human Resources

North Lethbridge Principals: Angela Wilde, Principal, Westminster Elementary; Sandy Scheldrup, Principal, Galbraith Elementary; Lenee Fyfe, Principal, Senator Buchanan Elementary, Mark Blankenstyn, Principal, Park Meadows Elementary

Other members: Cheryl Shimbashi, Transportation Coordinator; Daniel Heaton, Director of Facility Services

Considerations for the Boundary Review



Facility
Capacity



Community
Growth



Current
Enrolment



Enrolment
Projections



Transportation



Programs of Choice
(French Immersion)



School Transitions

The Boundary Review Committees consider a variety of factors when considering boundary changes, such as the following:

- Existing and proposed boundaries
- Enrolment projections (5 or 10 years as appropriate)
- Future residential growth potential
- Number of students impacted by the boundary change
- Implications for program delivery (specialty programs, class size, structure)
- Community based boundaries vs Program boundaries
- Grade configuration
- Facility utilization
- Transportation considerations
- Capital implications (modular classrooms, new construction, Infrastructure Maintenance and Renewal)

Review Timeline



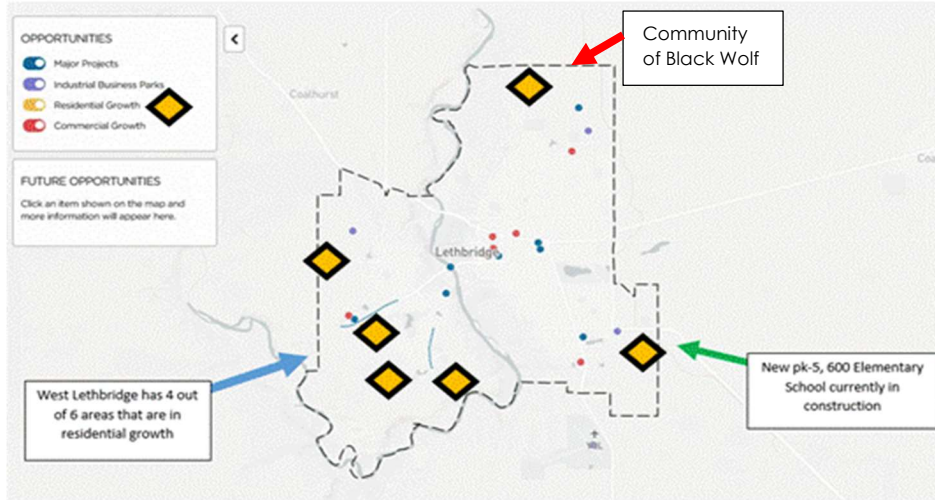
Enrolment and Capacity challenges

Facility Capacity

Current facility capacity in North Lethbridge elementary schools ranges from **54% to 84%** capacity (Westminster 54%, Park Meadows 69%, Buchanan, and Galbraith at 84%). A realignment of boundaries will not only create boundaries that work geographically but would provide more even distribution amongst North Lethbridge elementary schools. Realignment will also allow the ability to facilitate growth in the developing community of Black Wolf.

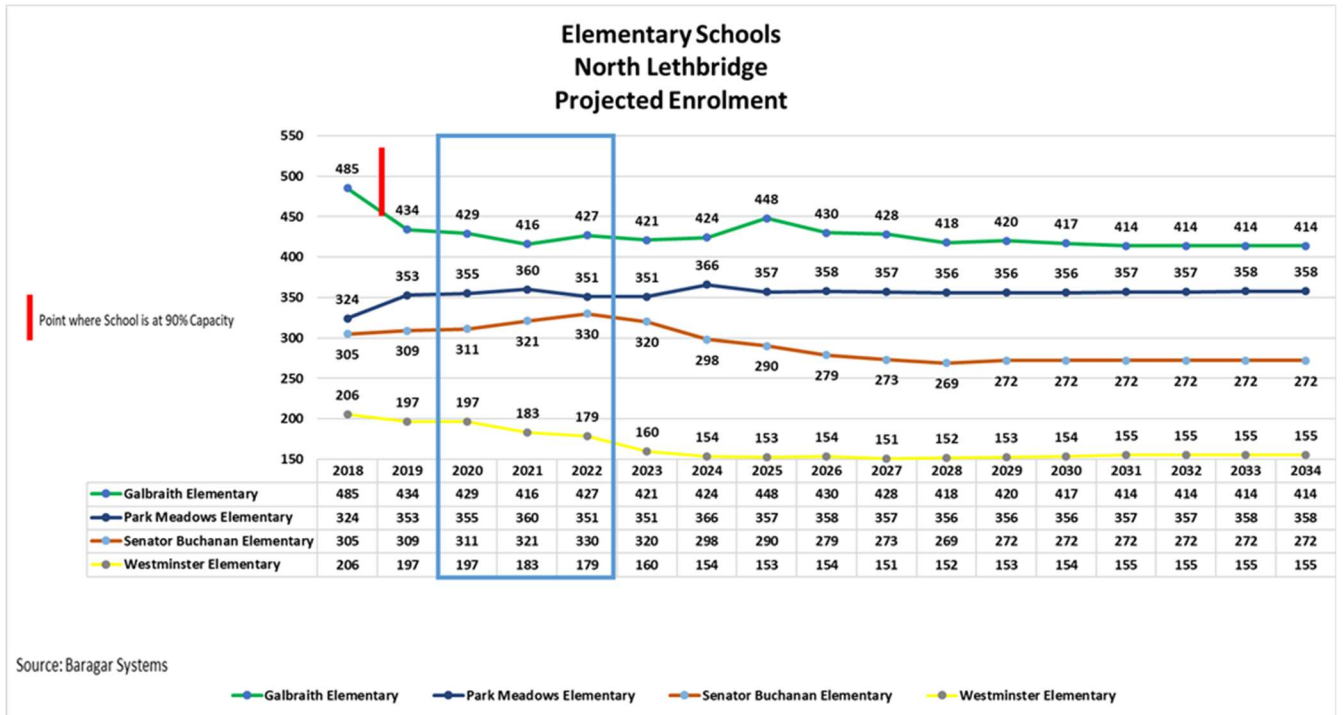
Areas of Growth in Lethbridge

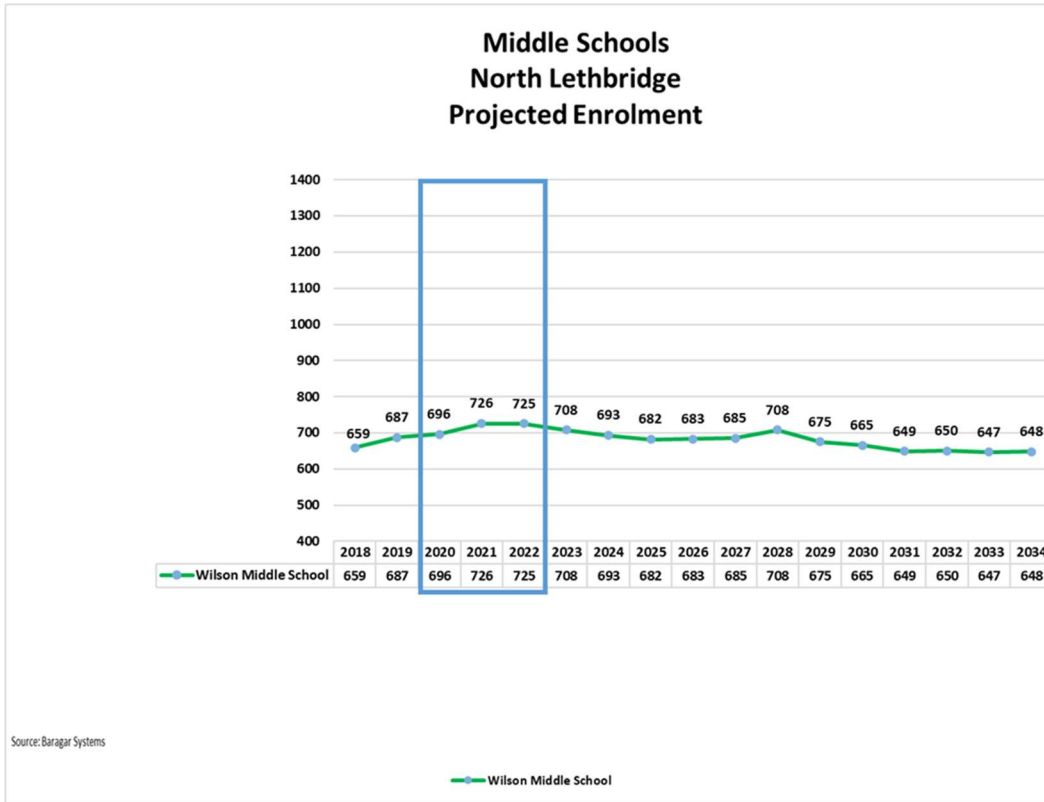
Chart provided by Economic Development Lethbridge



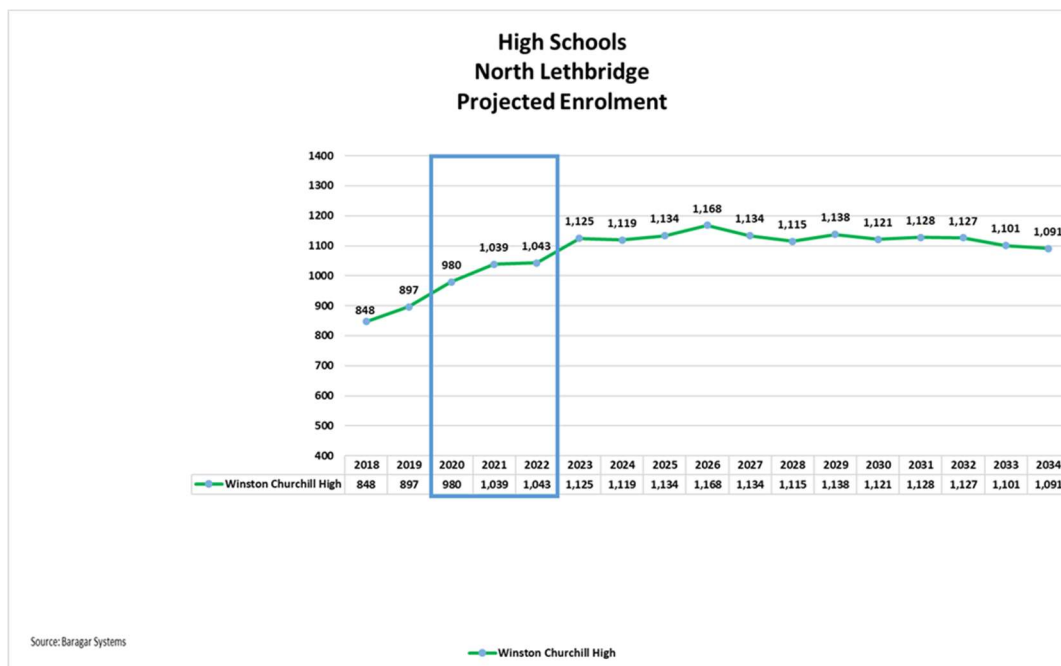
Enrolment Growth

The charts below show anticipated enrolment growth over the next 15 years for North Lethbridge elementary, middle and high schools. Despite growth in the community of Black Wolf, projections show overall enrolment in North Lethbridge remaining steady in the next 15 years.



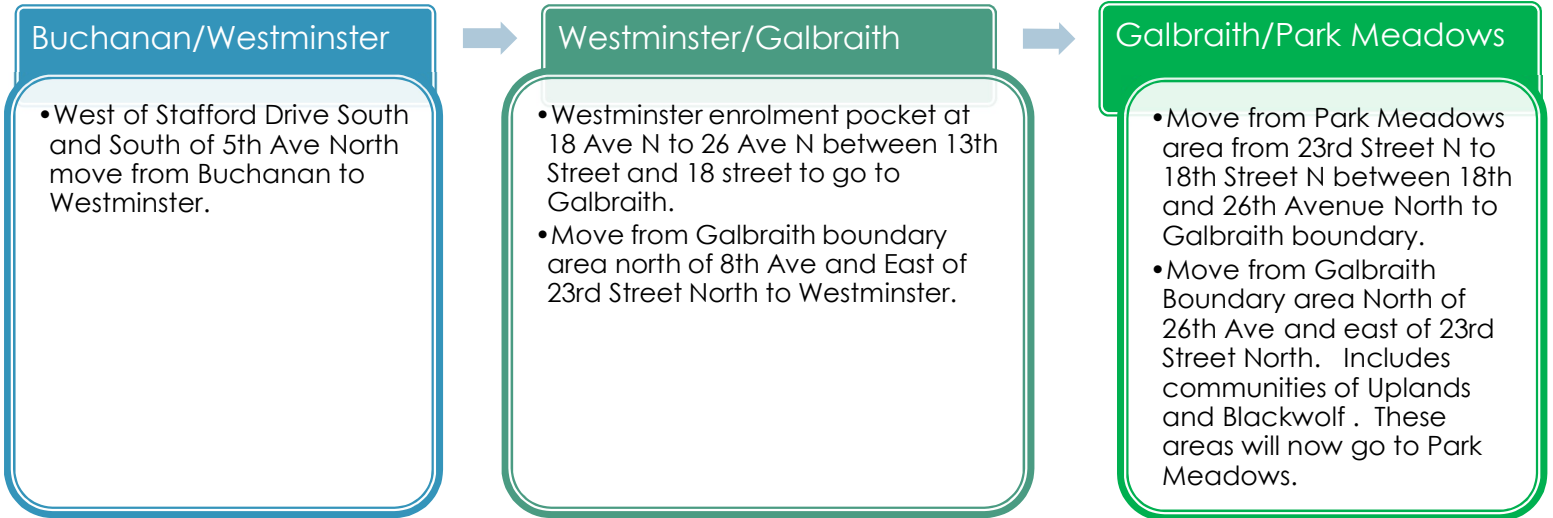


Middle school enrolment is expected to remain flat over the next 15 years, with slight growth over the 15 years at High School.

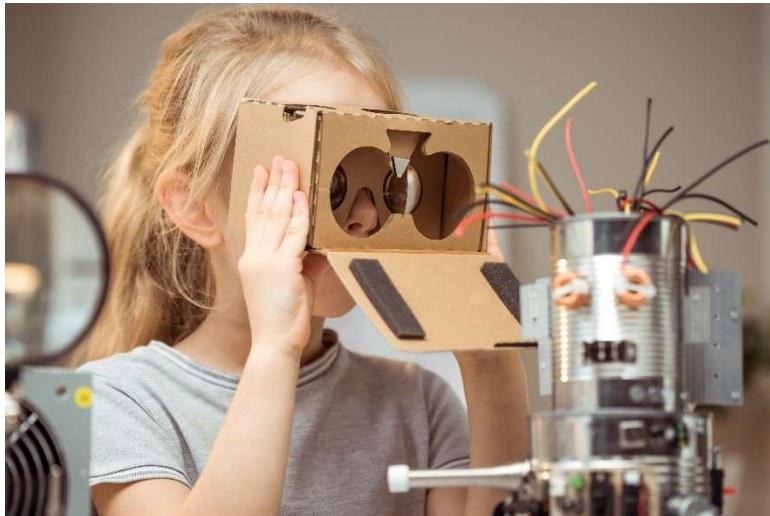


Overview of proposed changes

Elementary



School	Capacity	Enrolment 2019-2020	% Capacity Before change	Estimated Enrolment 2021-2022 after changes	% Capacity After change
Galbraith	515	434	84%	408	79%
Park Meadows	509	353	69%	358	70%
Senator Buchanan	369	309	84%	287	78%
Westminster	367	197	54%	240	65%



Middle School

Wilson Middle School

- No changes suggested for Wilson boundaries. Wilson will be the middle school for North Lethbridge.

School	Capacity	Enrolment 2019-2020	Estimated Enrolment 2021-2022	% Capacity
Wilson	886	687	726	82%

High School

Winston Churchill

- No changes recommended for Winston Churchill High School (WCHS). WCHS will remain the high school for North Lethbridge.

School	Capacity	Enrolment 2019-2020	Estimated Enrolment 2021-2022	% Capacity
Winston Churchill	1375	1178	1230	88%

Enrolling in new proposed boundaries

Enrolment in new school boundaries will take **effect for the 2021-2022 school year**. There will be strict adherence for students to attend the new established boundaries to address facility capacity and enrolment growth pressures.

The School Division will continue to follow *Policy 501.3.1 School Choice* that allows for fair and just consideration of requests made to have students enrolled in a school outside of their attendance area. Decisions will be based on the following criteria, including:

- Availability of space;
- Educational considerations, including class composition;
- Projected enrolment for the school;
- Suitability of school programs and services for that student;
- Students priority of enrolment (as per regulation 4 of the policy); and
- Additional costs to the school and/or Division.



Proposed School Boundary Pathways

Proposed English Program Catchment Pathways



North Lethbridge Family of Schools		
Elementary School	Middle School	High School
Galbraith	Wilson	Winston Churchill
Park Meadows		
Senator Buchanan		
Westminster		



French Immersion Catchment Pathways

North Lethbridge Family of Schools		
Elementary School	Middle School	High School
École Agnes Davidson (in South Lethbridge)	Gilbert Paterson (In South Lethbridge)	Lethbridge Collegiate Institute (In South Lethbridge)



Transportation Impacts

Elementary Schools

With the minor realignment of the boundaries it is anticipated there will be some transportation savings as some students in Black Wolf area previously designated to Galbraith would no longer require busing to Park Meadows Elementary. The small area north of Galbraith Elementary School previously designated to Westminster would no longer require busing to Westminster but is within walk limits for Galbraith Elementary School.

Transportation accommodations will need to be provided to area west of 13th street north and south of 5th avenue north that will move from Buchanan to Westminster boundary.

Middle School

No change

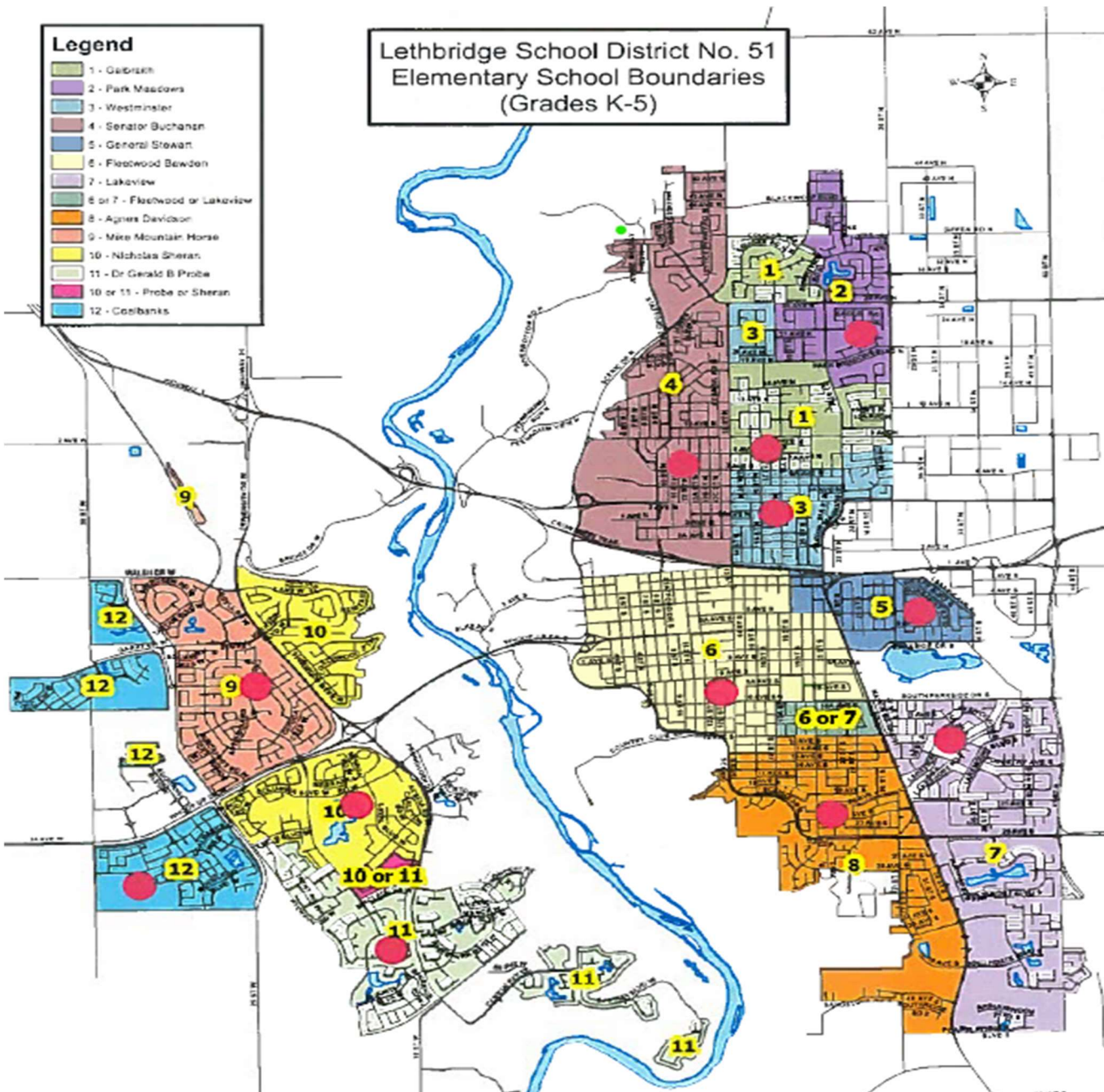
High School

No change



School Boundary Maps – Current

Elementary - Current Boundaries

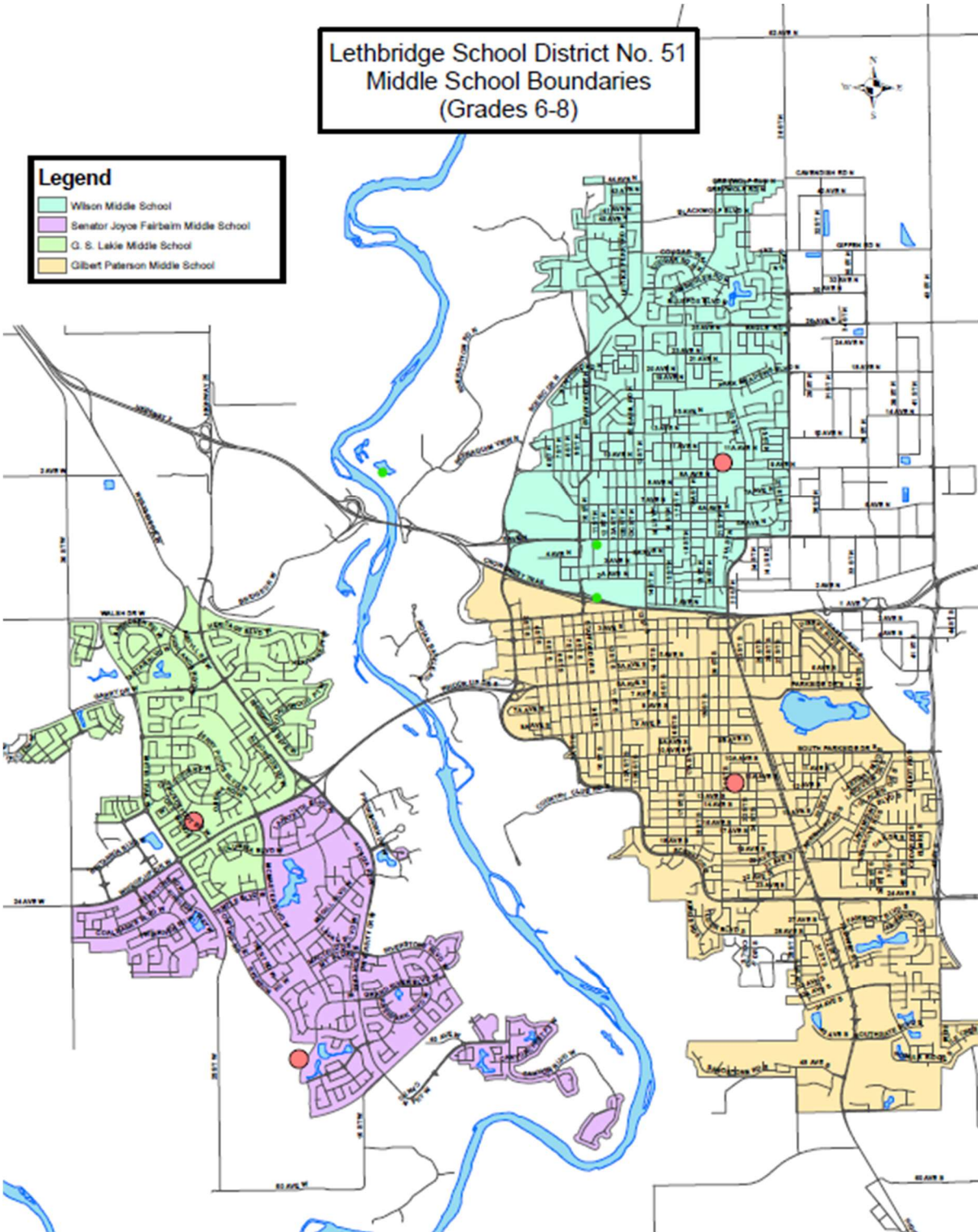


North
Lethbridge
Elementary
School
boundaries

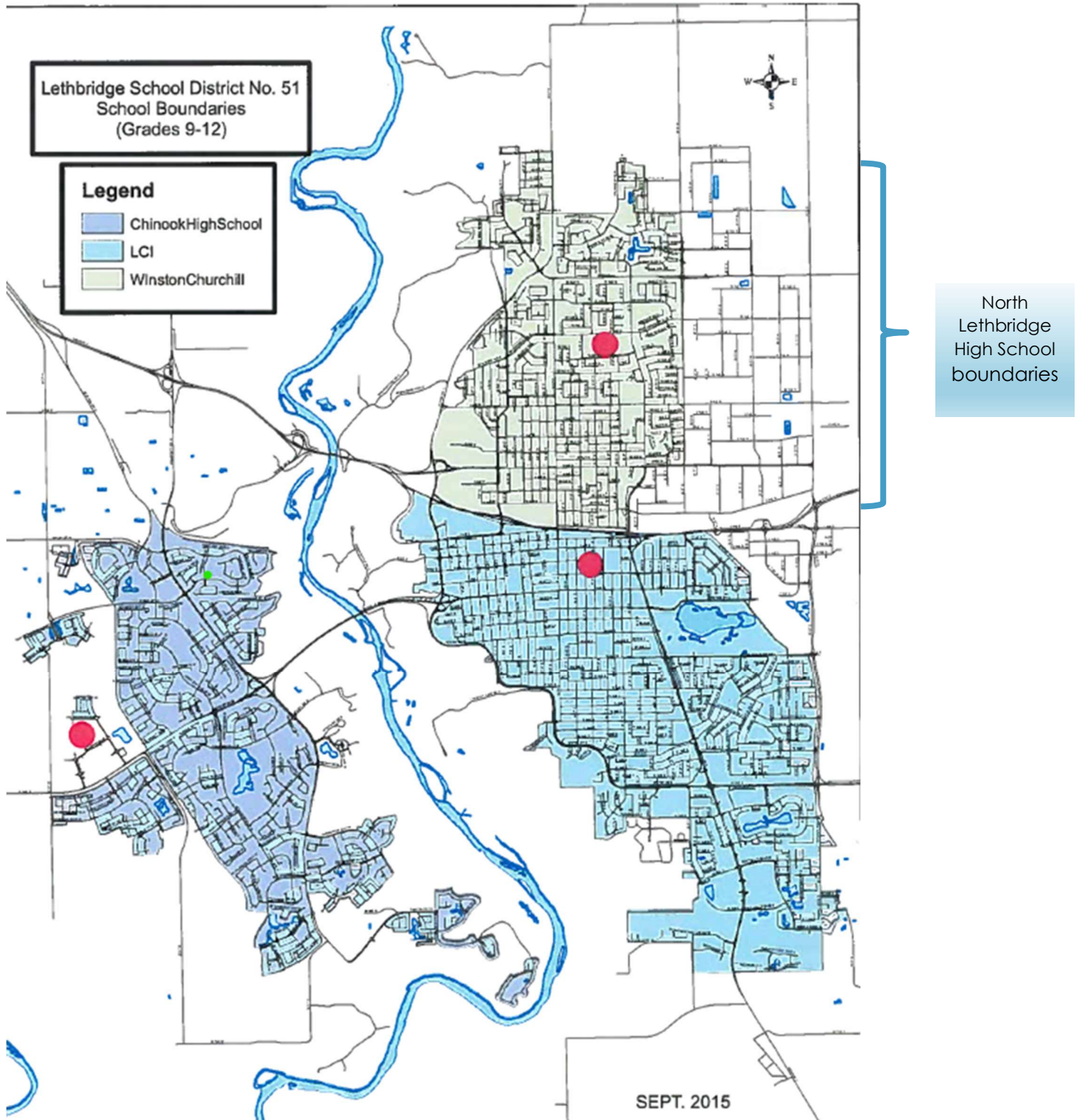
Lethbridge School District No. 51
Middle School Boundaries
(Grades 6-8)

Legend

- Wilson Middle School
- Senator Joyce Fairbairn Middle School
- G. S. Laskie Middle School
- Gilbert Paterson Middle School



North
Lethbridge
Middle
School
boundaries

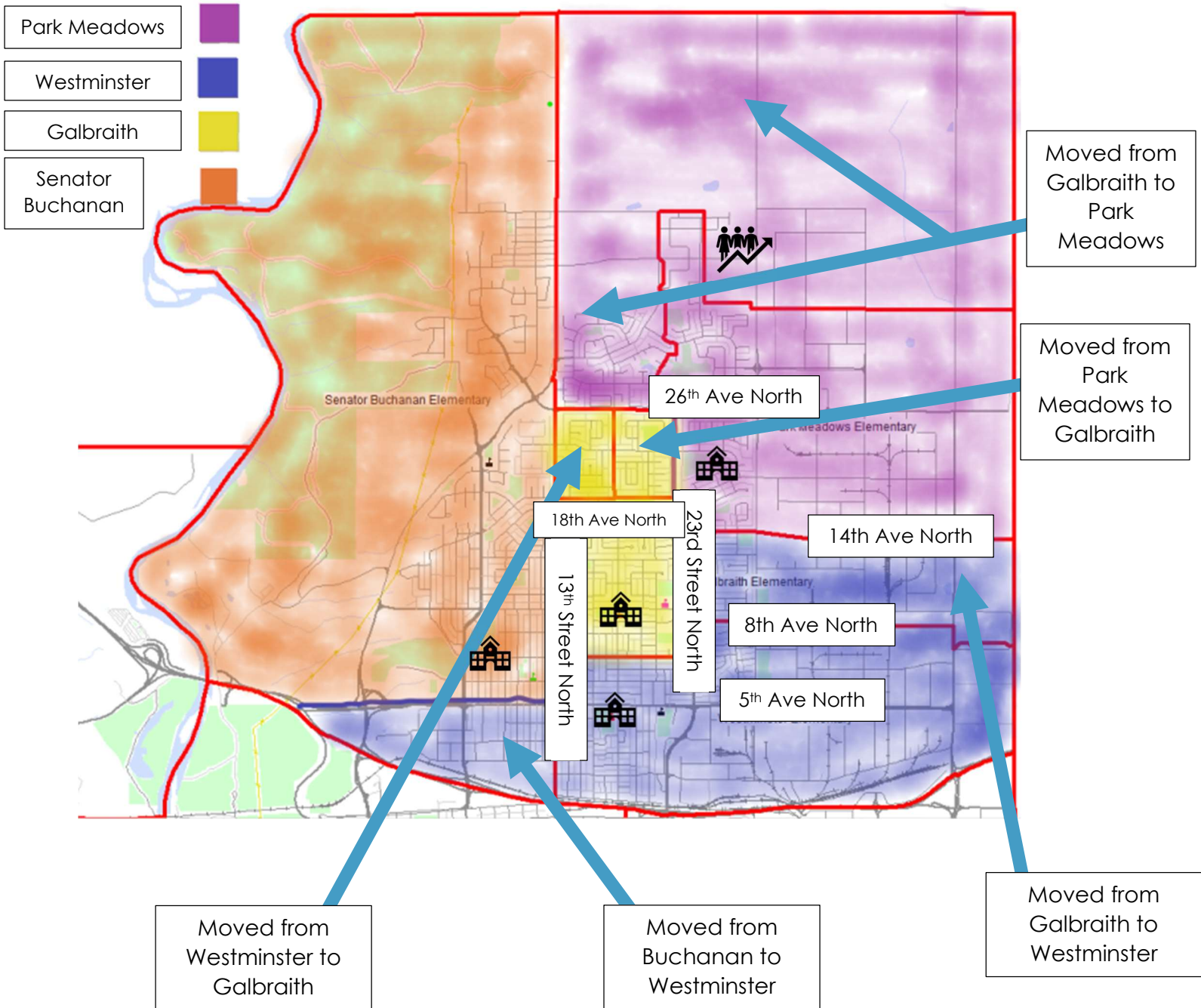


School Boundary Maps – Proposed 2021-2022

Elementary - Proposed

— Red line – Current boundaries. Shaded colour is new proposed boundaries for North Lethbridge Elementary Schools.

 Planned community growth.



Middle School-Proposed

- No change to Wilson boundary. Wilson will be the middle school for North Lethbridge.

High School-Proposed

- No change to Winston Churchill boundary. Winston Churchill will be the high school for North Lethbridge.

Community Engagement

Pre-Recorded Presentation

A pre-recorded presentation that outlines the proposed boundary review changes for North Lethbridge will be posted on the website for both staff and the public on **January 12th**. Staff will view the presentation starting at 3 p.m. and the public at 6:30 p.m.



Feedback Opportunity/Questions and Answers

Following the presentation of the video, both staff and parents will have the opportunity to provide feedback on the proposed boundary review changes. The website will ask for specific input on the following questions:

1. What do you see as a significant challenge with the boundaries as presented?
2. Do you have a solution for consideration that may address this challenge?
3. Please share any ideas you believe should be given consideration related to the proposed boundaries.
4. Additional Comments on the boundaries as proposed

Feedback will be accepted until January 28th, 2021. The feedback will be provided to the Board of Trustees in early February. The Board will review the feedback and the proposed boundaries will be provided for consideration and approval at the February 23rd meeting of the Board of Trustees.

The School Division understands that staff and students may have many questions related to the proposed boundaries that were presented. The Division, in anticipation of these questions, has posted a Frequently Asked Questions area on the Boundary Review website. There will also be the opportunity to post additional questions.